

PARK COUNTY, COLORADO
COMPREHENSIVE ANNUAL FINANCIAL REPORT
For the Year Ended December 31, 2007

Prepared by the Finance Department
Kathy Boyce, Finance Director

TABLE OF CONTENTS
(Continued)

	<u>PAGE</u>
FINANCIAL SECTION (Continued)	
Road and Bridge Fund – Budgetary Comparison Schedule	E2
Human Services Fund – Budgetary Comparison Schedule	E3
Combining and Individual Fund Schedules	
Combined Balance Sheet – Non-major Governmental Funds	F1
Combined Statement of Revenues, Expenditures and Changes in Fund Balances – Non-major Governmental Funds	F2
Conservation Trust Fund – Budgetary Comparison Schedule	F3
Grant Fund – Budgetary Comparison Schedule	F4
Employee Retirement Fund – Budgetary Comparison Schedule	F5
Sales Tax Trust Fund – Budgetary Comparison Schedule	F6
Library – Budgetary Comparison Schedule	F7
Sheriff’s Seizure and Program Fund – Budgetary Comparison Schedule	F8
E-911 Authority Fund – Budgetary Comparison Schedule	F9
1041 Fee Fund – Budgetary Comparison Schedule	F10
Debt Service Fund – Budgetary Comparison Schedule	F11
Capital Projects Fund – Budgetary Comparison Schedule	F12
Risk Management Internal Service Fund – Budgetary Comparison Schedule	F13
Recreation Fund – Budgetary Comparison Schedule	F14
Statement of Changes in Assets and Liabilities – Agency Fund	F15
STATISTICAL SECTION	
Financial Trends	
Net Assets by Component	G1
Changes in Net Assts by Component	G2 – G3
Fund Balances – Governmental Funds	G4
Changes in Fund Balances of Governmental Funds	G5 – G6

TABLE OF CONTENTS
(Continued)

	<u>PAGE</u>
STATISTICAL SECTION (Continued)	
Revenue Capacity	
Assessed and Estimated Actual Value of Taxable Property	G7
Property Tax Levies – Direct and Overlapping	G8
Principal Taxpayers	G9
Property Tax Levies and Collections	G10
Distribution of Property by Property Type Classification	G11
Schedule of Sales Tax Collection	G12
Debt Capacity	
Ratios of Outstanding Debt by Type	G13
Computation of Legal Debt Margin	G14
Demographic and Operating Information	
Demographic Information	G15
Employers by Category	G16
Recent History of Foreclosures	G17
Schedule of Indirect Costs, Fringe Benefits, and Allocation Base	G18
Miscellaneous Statistics	G19
COMPLIANCE SECTION	
Local Highway Finance Report	H1 – H2
Independent Auditors' Report on Compliance and on Internal Control Over Financial Reporting Based on an Audit of Financial Statements Performed in Accordance with <i>Government Auditing Standards</i>	H3 – H4
Independent Auditors' Report on Compliance with Requirements Applicable to Each Major Program and Internal Control over Compliance in Accordance With OMB Circular A-133	H5 – H6
Schedule of Findings and Questioned Costs	H7
Schedule of Expenditures of Federal Awards	H8

INTRODUCTORY SECTION



Park County Budget and Finance Department

PO Box 1373
501 Main Street
Fairplay, CO 80440
(719) 836-4214
Fax (719) 836-3273
E-Mail: finance@parkco.us

Kathy Boyce, Director

July 16, 2008

Park County Board of County Commissioners:

The Comprehensive Annual Financial Report of Park County for the fiscal year ended December 31, 2007, is submitted herewith. This report was prepared by the County's Finance Department. Responsibility for both the accuracy of the presented data and the completeness and fairness of the presentation, including all disclosures, rests with the County. We believe the data, as presented, is accurate in all material aspects; that it is presented in a manner designed to fairly set forth the financial position and results of operations of the County as measured by the financial activity of its various funds; and that all disclosures necessary to enable the reader to gain the maximum understanding of the County's financial affairs have been included.

This report includes all of the funds of the County. The County provides a full range of services including public safety, highways and streets, culture, library, planning, environmental health, public health, human services and general administrative services.

GAAP requires that management provide a narrative introduction, overview and analysis to accompany the basic financial statements in the MD&A. This letter of transmittal is designed to complement the MD&A and should be read in conjunction with it. The Park County's MD&A can be found immediately following the report of the independent auditors.

Economic Condition and Outlook

Established in 1861, Park County is approximately 45 miles wide from east to west, and 60 miles long, encompassing 2,166 square miles. Park County sits in the center of Colorado in the Rocky Mountains with elevations ranging from 7,000 to 14,000 feet. About 17,000 people reside in Park County with many second homeowners.

Location of property in the County determines the jurisdictions to which tax revenues are dispersed. 2007 Mill levy for Park County was 18.008 bringing in an estimated \$6.4 million in revenue to the County.

In addition to property tax assessments, the County collects a one-percent county sales tax. This tax is paid on all retail goods purchased in Park County, as well as lodging and restaurant purchases. Approved by the voters in 1997, revenues from the tax are used exclusively for the protection, enhancement and interpretation of water resources, as well as lands associated with water resources. 2007 sales tax collection showed a 4% increase over the previous year for a total collection of \$577,998.

Under Article X, Section 20 (2)(e) of the Colorado Constitution, the TABOR amendment (also known as Amendment I), the County is restricted as to the amount of annual revenues exceed allowances under the amendment, the amounts which exceed the limits must either be refunded to the taxpayers or the County must establish a ballot question asking taxpayers to allow the County to keep and utilize the excess revenue.

Major initiatives

Several major projects were either completed or undertaken in 2007. These included the following:

- Early pay-off of Debt Service on two Road & Bridge Lease-Purchase agreements
- Design and space plan for a new administrative office was completed
- Completion of construction of Search & Rescue building in Bailey
- E-recording software system for Clerk's office
- Security camera installation for Elections

2008 Budget Highlights

The 2008 budget as presented was balanced and financially conservative. It continues the County's commitment to providing the best services possible within the constraints of the budget. The budget addresses current and future community needs and service demands with prudent financial management. Specific items in the 2008 Budget include the following:

- County-wide time keeping system
- Blue Line copier for Development Services

Financial Information

A great amount of consideration is given to the adequacy of internal controls of the County's accounting system. Internal accounting controls are implemented to provide reasonable, but not absolute, assurance regarding: (1) the safeguarding of assets against loss from unauthorized use or disposition; and (2) the reliability of financial records for preparing financial statements and maintaining accountability for assets. This concept of reasonable assurance recognizes that: (1) the cost of a control should not exceed the benefits likely to be derived; and (2) the evaluations of costs and benefits require estimates and judgments by management.

Recognizing the above framework, we believe that the County's internal accounting controls adequately safeguard assets and provide reasonable assurance of proper recording of financial transactions.

Budgetary Control

Primary responsibility for fiscal analysis of budget to actual revenue and expenditure activity and overall program fiscal standing rests with the department operating the program. An expenditure budget is appropriated annually. Amounts are appropriated by resolution for each fund. The fund level serves as the limit at which appropriations may not be exceeded. The Finance Department also monitors financial activity and advises the other departments and the Board of Commissioners of concerns that come to its attention.

Debt Administration

Outstanding bond at December 31, 2007, totaled \$2,730,000 for the Construction of the Park County Jail. Standard & Poor's rates this revenue bond issue AAA.

Cash Management

Cash receipts are deposited daily. Excess cash is placed in temporary investments permitted by the State of Colorado. The County does not use derivative types of investments for any of its funds. Financial instruments that may be utilized are approved by resolution by the Board of Commissioners. Instruments used in 2007 were money markets, local government investments pools and authorized government securities. Length of investments varies from one day to five years. The amount of investment earnings in 2007 was \$709,094 as compared to \$546,136 in 2006. The average return on investment for the year 2007 was 4.975% as compared to 4.9% in 2006.

The County's investment policy is to minimize credit and market risk while maintaining a favorable yield on its portfolio. All deposits are either federally insured or collateralized per state statutes. The County's investments in federal securities are held at Park State Bank – Woodland Park, CO and through ADP Clearing and Outsourcing Services – New York, NY, under an agency agreement established pursuant to state statute. The majority of investments are classified in the lowest range of credit risk as defined by the Governmental Accounting Standards Board.

Risk Management

The County is insured under the Colorado Counties, Inc. Coverage's in this County Insurance pool include defined liability, property damage, and workers' compensation. Expenses for the amount paid to Colorado Counties are apportioned to General Fund, Human Services and Road and Bridge fund.

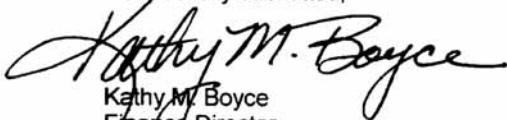
The County also provides coverage to employees for health, dental, life and disability insurance. Contributions come from both the County and employees. The County is partially self-insured with a \$100,000 stop loss policy per incident. Employee contributions pay for part of the administration costs and the County contributions go into a separate bank account to pay claims. Revenues and expenses for this activity are recorded in the Risk Management fund.

Other Information

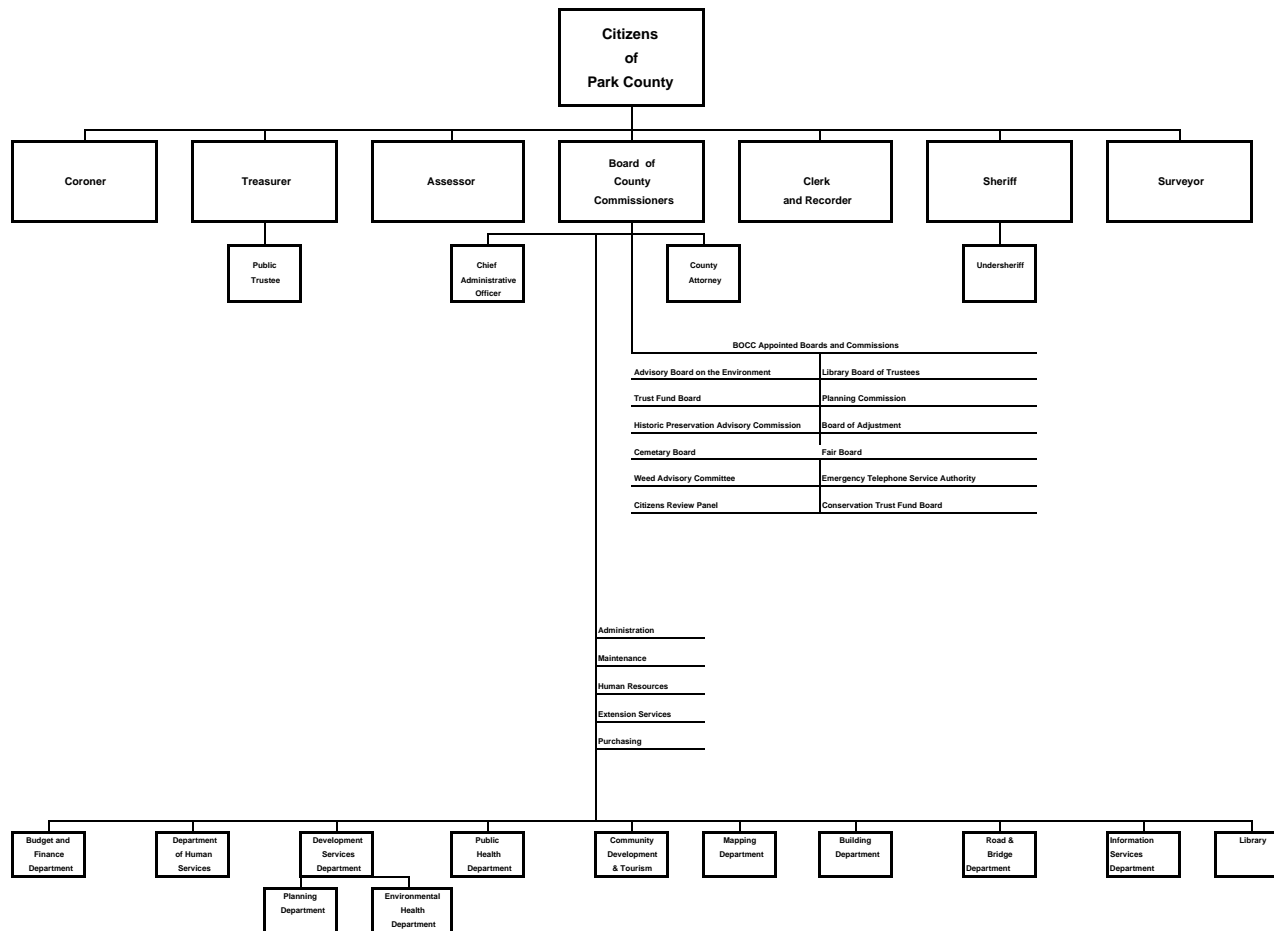
Independent Audit – State Law requires an annual audit of the County's financial statements by independent certified public accountants selected by the Board of Commissioners. This requirement has been complied with and the auditor's opinion has been included in this report.

Acknowledgements – The preparation and completion of this report on a timely basis could not have been accomplished without the dedication and efficiency of the Counties Finance department. Special thanks to the independent certified public accounting firm John Cutler & Associates for their assistance and the professional manner in which they performed there audit engagement. I would like to also thank the Board of County Commissioners for their interest and support in planning and conducting the financial operations of the County in a responsible and progressive manner.

Respectfully submitted,


Kathy M. Boyce
Finance Director

Park County Government Organizational Chart



PARK COUNTY, COLORADO

Listing of Elected and Appointed Officials As of December 31, 2007

ELECTED OFFICIALS:

BOARD OF COUNTY COMMISSIONERS

District I	John Tighe
District II	Leni Walker
District III	Louis (Doc) Mckay

ASSESSOR	David B. Wissel
----------	-----------------

CLERK - RECORDER	Debra Green
------------------	-------------

CORONER	Sharon R. Morris
---------	------------------

DISTRICT ATTORNEY	Molly Chilsom
-------------------	---------------

SHERIFF	Fred Wegener
---------	--------------

SURVEYOR	Jack L. Kirby
----------	---------------

TREASURER	Michelle Miller
-----------	-----------------

APPOINTED OFFICIALS:

CHIEF ADMINISTRATIVE OFFICER	Sandy Berryman
------------------------------	----------------

CHIEF BUILDING INSPECTOR	Greg Kimsey
--------------------------	-------------

COUNTY ATTORNEY	Lee Phillips
-----------------	--------------

DIRECTOR, INFORMATION SERVICES	Sylvia Liles
--------------------------------	--------------

DIRECTOR, BUDGET AND FINANCE	Kathy Boyce
------------------------------	-------------

DIRECTOR, HUMAN SERVICES	Mary Baydarian
--------------------------	----------------

DIRECTOR, LIBRARIES	Patricia Chapman
---------------------	------------------

DIRECTOR, DEVELOPMENT SERVICES	Tom Eisenman
--------------------------------	--------------

DIRECTOR, PUBLIC HEALTH	Robin Phillips
-------------------------	----------------

DIRECTOR, ROAD AND BRIDGE	David Kintz, Sr.
---------------------------	------------------

DIRECTOR, TOURISM AND COMMUNITY DEVELOPMENT	Gary E. Nichols
---	-----------------

Certificate of Achievement for Excellence in Financial Reporting

Presented to

Park County
Colorado

For its Comprehensive Annual
Financial Report
for the Fiscal Year Ended
December 31, 2006

A Certificate of Achievement for Excellence in Financial Reporting is presented by the Government Finance Officers Association of the United States and Canada to government units and public employee retirement systems whose comprehensive annual financial reports (CAFRs) achieve the highest standards in government accounting and financial reporting.



Oliver S. Cox

President

Jeffrey R. Emer

Executive Director

FINANCIAL SECTION



To the Board of County Commissioners
Park County, Colorado

INDEPENDENT AUDITORS' REPORT

We have audited the accompanying financial statements of the governmental activities, the business-type activities, each major fund, and the aggregate remaining fund information of Park County, Colorado, as of and for the year ended December 31, 2007, which collectively comprise the basic financial statements of the County, as listed in the table of contents. These financial statements are the responsibility of Park County, Colorado's management. Our responsibility is to express opinions on these financial statements based on our audit.

We conducted our audit in accordance with auditing standards generally accepted in the United States of America. Those standards require that we plan and perform the audit to obtain reasonable assurance about whether the financial statements are free of material misstatement. An audit includes examining, on a test basis, evidence supporting the amounts and disclosures in the financial statements. An audit also includes assessing the accounting principles used and significant estimates made by management, as well as evaluating the overall financial statement presentation. We believe that our audit provides a reasonable basis for our opinions.

In our opinion, the financial statements referred to above present fairly, in all material respects, the respective financial position of the governmental activities, the business-type activities, each major fund, and the aggregate remaining fund information of Park County, Colorado, as of December 31, 2007, and the respective changes in financial position and cash flows, where applicable, for the year then ended in conformity with accounting principles generally accepted in the United States of America.

In accordance with *Government Auditing Standards*, we have also issued our report dated July 16, 2008 on our consideration of the County's internal control over financial reporting and on our tests of its compliance with certain provisions of laws, regulations, contracts, and grants. That report is an integral part of an audit performed in accordance with *Government Auditing Standards* and should be read in conjunction with this report in considering the results of our audit.

The management's discussion and analysis and required supplementary information listed in the table of contents is not a required part of the basic financial statements but is supplementary information required by the Governmental Accounting Standards Board. We have applied certain limited procedures, which consisted principally of inquiries of management regarding the methods of measurement and presentation of the supplementary information. However, we did not audit the information and express no opinion on it.

Our audit was conducted for the purpose of forming opinions on the financial statements that collectively comprise Park County, Colorado's basic financial statements. The combining and individual fund schedules listed in the table of contents are presented for purposes of additional analysis and are not a required part of the basic financial statements. The accompanying financial information presented and the Schedule of Expenditures of Federal Awards are presented for purposes of additional analysis as required by the U.S. Office of Management and Budget Circular A-133, Audits of State and Local Governments and Non-Profit Organizations, and has been subject to the auditing procedures applied in the audit of the County's basic financial statements and, in our opinion, is fairly stated in all material respects in relation to the basic financial statements taken as a whole.

The statistical information is presented for the purpose of additional analysis and is not a required part of the basic financial statements. This information has not been subjected to auditing procedures applied in the audit of the basic financial statements and, accordingly, we express no opinion.

John Cutler & Associates, LLC

July 16, 2008

Park County, Colorado

Management's Discussion and Analysis

December 31, 2007

As management of Park County, Colorado (the "County"), we offer readers of the County's financial statements this narrative overview and analysis of the financial activities of the County for the fiscal year ended December 31, 2007.

FINANCIAL HIGHLIGHTS

- The assets of Park County exceeded its liabilities at the close of the most recent fiscal year by \$20,509,222 (net assets). Of this amount, \$12,442,856 (unrestricted net assets) may be used to meet the government's ongoing obligations to citizens and creditors.
- The government's total net assets increased by 2,843,538. A large portion of this is due to the General Fund's revenues being higher than anticipated and expenditures being lower than anticipated and additions to capital assets.
- As of the close of the current fiscal year, Park County governmental funds reported combined ending fund balances of \$11,723,060, an increase of \$794,751. Approximately \$9,939,320 is available for spending at the government's discretion (unreserved fund balance).
- At the end of the current year, unreserved fund balance for the General Fund was \$3,063,097 or 24% of total General Fund expenditures.
- Park County's total debt decreased by \$1,958,914 during the current fiscal year. The key factor in this decrease was the final payment on capital leases of vehicles and equipment.

OVERVIEW of the FINANCIAL STATEMENTS

This discussion and analysis is intended to serve as an introduction to the County's basic financial statements. The County's basic financial statements are comprised of three components:

- 1) government-wide financial statements;
- 2) fund financial statements; and
- 3) notes to the financial statements.

This report also provides other supplementary information in addition to the financial statements themselves.

General Purpose Financial Statements:

The government-wide financial statements are designed to provide readers with a broad overview of the County's finances, in a manner similar to a private-sector business.

The Statement of Net Assets presents information on all of the County's assets and liabilities, with the difference between the two reported as net assets. Over time, increases or decreases in net assets may serve as a useful indicator of whether the financial position of the County is improving or deteriorating.

The Statement of Activities presents information showing how the government's net assets changed during the most recent fiscal year. All changes in net assets are reported as soon as the underlying event giving rise to the change occurs, regardless of the timing of related cash flows. Thus, revenues and expenses are reported in this statement for some items that will only result in cash flows in future fiscal periods.

Both of the government-wide financial statements distinguish functions of the County that are principally supported by taxes and intergovernmental revenues (governmental activities). The governmental activities of the County include general government, judicial, public safety, health and human services, auxiliary services, road and bridge, and culture and recreation.

The government-wide financial statements can be found on pages C1 and C2 of this report.

OVERVIEW of the FINANCIAL STATEMENTS (continued)

Fund Financial Statements:

A fund is a grouping of related accounts that is used to maintain control over resources that have been segregated for specific activities or objectives. The County, like other state and local governments, uses fund accounting to ensure and demonstrate compliance with finance-related legal requirements. All of the funds of the County can be divided into two categories: governmental funds and fiduciary funds.

Governmental Funds:

Governmental funds are used to account for essentially the same functions reported as governmental activities in the government-wide financial statements. However, unlike the government-wide financial statements, governmental fund financial statements focus on near-term inflows and outflows of spendable resources, as well as on balances of spendable resources available at the end of the fiscal year. Such information may be useful in evaluating a government's near-term financing requirements. The County's major governmental funds include the General Fund, Road and Bridge Fund, and Human Services Fund. The County also reports a number of minor governmental funds. Because the focus of governmental funds is narrower than that of the government-wide financial statements, it is useful to compare the information presented for governmental funds with similar information presented for governmental activities in the government-wide financial statements. By doing so, readers may better understand the long-term impact of the government's near-term financing decisions. The Balance Sheet and the Statement of Revenues, Expenditures and Changes in Fund Balances provide a reconciliation to facilitate this comparison between governmental funds and governmental activities.

General Fund:

Administration of general County operations is accomplished through various departments within the General Fund. At the beginning of 2007, the fund balance was \$3,464,254; and at the end of 2007, the fund balance increased by \$176,749, resulting in a fund balance of \$3,641,003. Following is a listing of the General Fund departments listed by function.

Administrative Operations:

- The Commissioners' Office coordinates County operations, financial reporting and accounting, and budget preparation.
- The Commissioners' Attorney works under direction of the Commissioners.
- The Planning and Building Office monitors the change of land use within the County.
- The Assessor's Office appraises and assesses taxes for all property within the County.
- The Treasurer's Office collects taxes, fees and handles all County banking needs.
- The Clerk & Recorder's Office operates motor vehicle, recordings, runs all elections, and operates the driver's license department.
- The Maintenance department oversees maintenance and cleaning of County buildings.
- Finance, Purchasing and Human Resource departments administer personnel, payroll and financial support functions.

Judicial:

- The District Attorney's Office provides judicial services jointly with other counties within the district.

Public Safety:

- The Sheriff's department, County Jail, Coroner's Office, Emergency Communication Center, Emergency Management and Animal Control provide public safety.

Health and Hospitals:

- The County's Public Health department provides services for pregnant mothers, newborn babies, and vaccinations for Park County residents.
- The Environmental Health department provides restaurant, groundwater and septic permits and inspections.
- Pikes Peak Mental Health provides mental health counseling and services to Park County and other counties.

OVERVIEW of the FINANCIAL STATEMENTS (continued)

Governmental Funds (continued):

General Fund (continued):

Community Auxiliary Services:

- The Park County Fair is held annually during the month of July, under direction of the Park County Commissioners through the Park County Fair Board.
- The County provides office space and funding to South Park Senior Coalition to assist seniors in the County.
- Economic Development provides assistance to retain current businesses and assists in attracting new business into the County. This department also handles tourism requests.
- The Veterans' Office assists veterans living in the County.
- The County provides the communications network and dispatch services for most County entities including fire, local police and ambulance communications.

Intergovernmental Co-operation:

- The County, in partnership with Teller County provides a Weed Management program.

Special Revenue Funds:

The County's special revenue funds account for specific revenues that are legally restricted to expenditure for a particular purpose. The County's special revenue funds include the Road and Bridge Fund, Human Services Fund, Conservation Trust Fund, Capital Projects Fund, Grant Fund, Library Fund, E-911 Fund, 1041 Fee Fund, Employee Retirement Fund and Sales Tax Trust Fund.

At the beginning of 2007, the County's special revenue funds had aggregate fund balances of \$2,174,673 and ended the year with fund balances totaling \$3,064,100; an increase of \$889,427.

Fiduciary Funds:

Agency Funds:

The County Treasurer holds cash and investments as an agent for other governments, as well as for County funds. Agency funds held by the County Treasurer on behalf of other governments totaled \$1,013,315 at the end of 2007.

Schedules and Notes to the Financial Statements:

- The notes provide additional information that is essential to a full understanding of the data provided in the government-wide and fund financial statements. The Notes to the Financial Statements can be found on pages D1 through D16 of this report.
- The combining statements referred to earlier in connection with non-major governmental funds are presented immediately following the required supplementary information. Combining and individual fund statements and schedules can be found on pages F1 through F13.
- The Local Highway Finance Report on pages G1 and G2 is submitted to the State of Colorado and reflects the County's receipts and disbursements for road and street purposes during the year.
- In connection with the receipt and expenditure of Federal-source funds, the County must comply with certain requirements detailed in Circular A-133 Compliance Supplement issued by the U.S. Office of Management and Budget. The auditor's reports on the County's internal controls over such monies and compliance with those requirements are included on pages H1 through H6, together with a summary of all Federal-source expenditures for 2007 on page H7.

FINANCIAL ANALYSIS

The County uses fund accounting to ensure compliance with finance-related legal requirements. The County adopts an annually appropriated budget for each of its funds. Budgetary comparison statements have been provided to demonstrate compliance.

Government-wide Financial Analysis:

As previously mentioned, the government-wide financial statements are designed to provide readers with a broad overview and long-term analysis of the County's finances, in a manner similar to a private-sector business.

The following schedule summarizes the County's net assets at the end of 2007:

Park County's Net Assets at December 31, 2007

	Governmental Activities		Business-type Activities	
	2007	2006	2007	2006
Assets:				
Current and other assets	\$21,103,010	\$21,163,097	\$59,450	\$69,790
Current assets, net of accumulated depreciation	12,882,455	11,549,511	0	0
Total Assets	34,112,152	32,712,608	59,450	69,790
Liabilities:				
Current liabilities	8,154,472	7,729,550	63	3,915
Long-term debt	5,381,158	7,383,249	0	0
Total Liabilities	13,535,630	15,112,799	63	3,915
Net Assets (restated)				
Invested in capital assets, net of related debt	7,501,297	4,166,262	0	0
Restricted for emergencies	565,069	535,902	0	0
Unrestricted	12,383,469	12,897,645	59,387	65,875
Total Net Assets	\$20,449,835	\$17,599,809	\$59,387	\$65,875

Traditionally, a government's largest investment is in its capital assets: land, building, equipment, machinery, and specialized tools which are necessary to deliver and/or provide services to its residents and customers. Because capital assets may not be quickly converted to cash, these assets are not an available source of funding for future spending. Park County's capital assets account for 27% of its total assets at the end of 2007.

At the end of the 2007 fiscal year, the County's net assets totaled \$20,449,835; an increase of \$2,850,026 over the prior year balance. This increase is partially attributable to equipment additions purchased in 2007 and overall expenses being less than anticipated. Restricted net assets totaling \$565,069, or approximately 3% of fiscal spending, has been reserved for emergencies in accordance with the Taxpayer's Bill of Rights ("TABOR") requirements for local governments. \$5,543,871 or 27% of total net assets represents the County's "equity" in capital assets (i.e., cost of capital assets, less accumulated depreciation and debt incurred to acquire those capital assets). 75% of the County's net assets are unrestricted and available to fund future government operations.

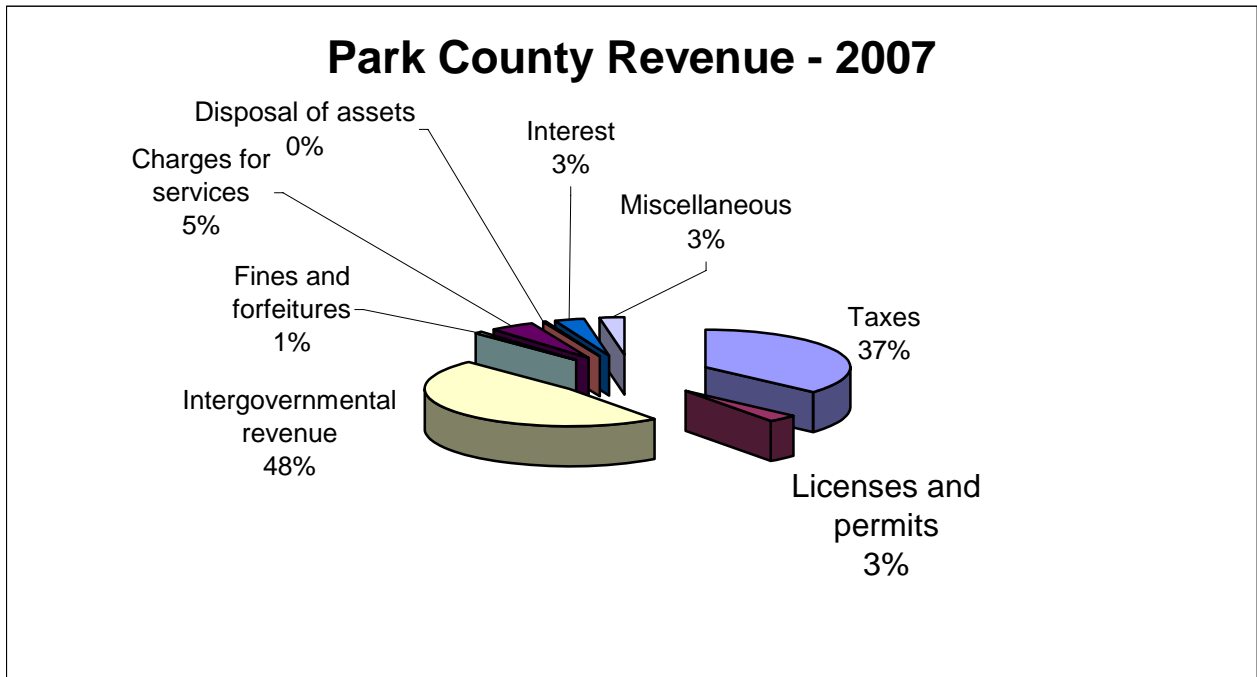
FINANCIAL ANALYSIS (continued)**Government-wide Financial Analysis (continued):**

The following schedule summarizes the changes in the County's net assets during 2007:

Park County's Change in Net Assets

	Governmental Activities		Business-type Activities	
	2007	2006	2007	2006
Revenues:				
Program revenues:				
Charges for services	\$4,878,578	\$5,002,643	\$38,910	\$27,979
Operating grants and contributions	7,480,543	8,501,411	0	0
Capital grants and contributions	148,738	305,503	0	0
General revenues:				
Property taxes	6,408,427	5,996,015	0	0
Other taxes, interest and other revenue	3,123,033	2,521,554	0	0
Total Revenues	<u>22,039,319</u>	<u>22,327,126</u>	<u>38,910</u>	<u>27,979</u>
Expenses				
General government	5,042,281	5,127,655	0	0
Health and welfare	2,839,386	3,386,282	0	0
Public safety	5,718,203	6,376,205	0	0
Culture and recreation	723,001	660,923	45,398	6,988
Judicial	263,781	260,781	0	0
Public works	4,334,745	4,421,922	0	0
Interest on long-term debt	267,896	306,517	0	0
Total Expenses	<u>19,189,293</u>	<u>20,540,285</u>	<u>45,398</u>	<u>6,988</u>
Change in Net Assets	2,850,026	1,786,841	(6,488)	20,991
Net Assets - January 1	17,599,809	15,812,968	65,875	44,884
Net Assets - December 31	<u>\$20,449,835</u>	<u>\$17,599,809</u>	<u>\$59,387</u>	<u>\$65,875</u>

The following graph illustrates the County's 2007 revenue sources:

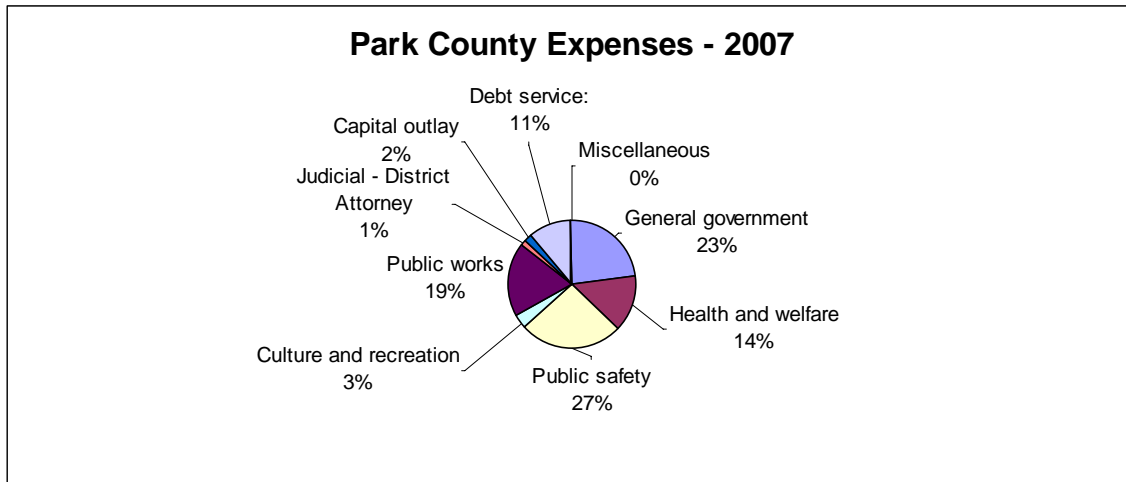


FINANCIAL ANALYSIS (continued)

Government-wide Financial Analysis (continued):

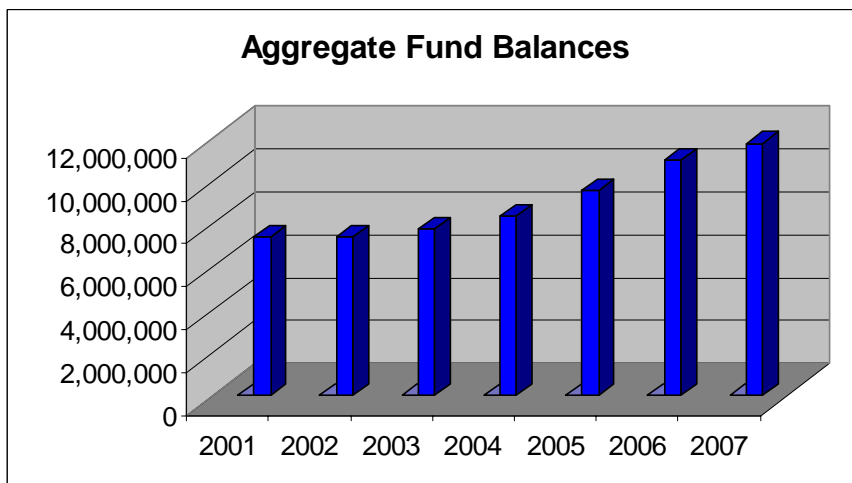
For 2007, the County increased funding to allow for the purchase of supplies, equipment, vehicles, and manpower to various departments of the governmental activities to enhance quality services.

The following graph depicts the County's 2007 expenses:



Fund Financial Analysis:

The graphic below shows the County's actual total fund balances for fiscal years 2001 through 2007.



As noted earlier, the County's fund balances have grown during the 2007 fiscal year, due to the combined effect of lower than expected aggregate expenditures and acquisition of capital assets.

FINANCIAL ANALYSIS (continued)

Budget Variances and Amendments:

The County was required to amend the budgets of several funds for the current fiscal year, in order to ensure that expenditures did not exceed appropriations and to comply with State budget statutes. The more significant of these budget amendments were as follows:

- General Fund departments received budgetary increases totaling \$248,807 to cover general operating expenditures in excess of originally budgeted amount. These increases included mid-year Health insurance and salary increases, purchase of capital assets including e-recording software and vehicles.

Capital Assets and Debt Administration:

Capital Assets

The County's investment in capital assets for its governmental activities as of December 31, 2007, amounts to \$12,882,455. This is a decrease of 624,482 from prior the prior year. The main reason for the decrease was the depreciation expense of \$1,251,847 which exceeded capital outlay of \$627,365. Additional information on the County's capital assets can be found in Note 4 of the Notes to Financial Statements.

Long-Term Debt

As of the end of the current fiscal year, the County's long-term debt had decreased \$2,102,090 due to yearly payments and an early payoff of some of the capital leases.

In 2007 no new leases were taken out.

Additional information on the County's long-term debt can be found in Note 5 of the Notes to Financial Statements.

Next Year's Budget and Rates:

The County's General Fund balance at the end of fiscal year 2007 was \$ 3,641,003. A reserve is considered necessary to start the year and provide basic services to the residents of and visitors to Park County. An adequate reserve at the year-end on which to operate a minimum of three months or 25% is considered necessary, as the majority of the property tax revenue is not received until April of each year. At the end of 2007, the County's General Fund balance approximated 32% of actual 2007 General Fund expenditures.

At the end of the 2007 fiscal year, unreserved fund balances in the General Fund and Road and Bridge Fund were to \$3,063,097 and \$3,404,655, respectively. Park County has appropriated \$1,039,564 and \$364,120 respectively, from these funds for spending in the 2008 fiscal year budget. In 2008, the County anticipates the Human Services Fund will have expenditures totaling slightly more than \$3,472,978; \$4,139 of which has been appropriated from unrestricted fund balance.

Request for Information

This financial report is designed to provide a general overview of the County's finances for all those with an interest. Questions concerning any of the information provided in this report or requests for additional financial information should be addressed to the Park County Finance Office, P.O. Box 1373, Fairplay, Colorado 80440.

BASIC FINANCIAL STATEMENTS

Park County, Colorado
Statement of Net Assets
December 31, 2007

	Governmental Activities	Business-type Activities	Total
Assets:			
Cash and investments - Unrestricted	\$ 12,687,634	\$ 59,450	\$ 12,747,084
Cash and investments - Restricted	233,452	-	233,452
Receivables, net:			
Taxes	6,814,571	-	6,814,571
Intergovernmental	38,828	-	38,828
Accounts	847,088	-	847,088
Other	6,149	-	6,149
Inventories, at cost	39,420	-	39,420
Prepaid expenses	22,836	-	22,836
Deferred bond issuance costs, net	154,795	-	154,795
Deferred bond refunding costs, net	258,237	-	258,237
Capital assets, not depreciated	1,957,426	-	1,957,426
Capital assets, depreciated, net of accumulated depreciation	10,925,029	-	10,925,029
Total assets	33,985,465	59,450	34,044,915
Liabilities:			
Accounts/vouchers payable	1,163,557	63	1,163,620
Accrued interest and expenses	176,344	-	176,344
Deferred property taxes	6,814,571	-	6,814,571
Debt obligations:		-	
Due within one year	904,125	-	904,125
Due in more than one year	4,477,033	-	4,477,033
Total liabilities	13,535,630	63	13,535,693
Net Assets:			
Invested in capital assets, net of related debt	7,501,297	-	7,501,297
Restricted for emergencies	565,069	-	565,069
Unrestricted	12,383,469	59,387	12,442,856
Total Net Assets	\$ 20,449,835	\$ 59,387	\$ 20,509,222

The accompanying notes are an integral part of these financial statements.

Park County, Colorado
Statement of Activities
For the Year Ended December 31, 2007

Functions/Programs:	Expenses	Program Revenues			Net (Expense) Revenue and Change in Net Assets		
		Charges for Services	Operating Grants and Contributions	Capital Grants and Contributions	Primary Government		
					Governmental Activities	Business-Type Activities	Total
Primary Government							
Governmental activities:							
General government	\$ 5,042,281	\$ 1,688,882	\$ -	\$ -	\$ (3,353,399)	\$ -	\$ (3,353,399)
Health and welfare	2,839,386	299,142	2,400,728	-	(139,516)	-	(139,516)
Public safety	5,718,203	2,298,627	-	9,881	(3,409,695)	-	(3,409,695)
Culture and recreation	723,001	5,024	-	138,857	(579,120)	-	(579,120)
Public works	4,334,745	586,903	5,079,815	-	1,331,973	-	1,331,973
Judicial - District Attorney	263,781	-	-	-	(263,781)	-	(263,781)
Interest on long-term debt	267,896	-	-	-	(267,896)	-	(267,896)
Total Governmental activities	19,189,293	4,878,578	7,480,543	148,738	(6,681,434)	-	(6,681,434)
Business-type activities:							
Recreation	45,398	38,910	-	-	-	(6,488)	(6,488)
Total Primary Government	\$ 19,234,691	\$ 4,917,488	\$ 7,480,543	\$ 148,738	(6,681,434)	(6,488)	(6,687,922)
General revenues:							
Taxes:							
Property taxes					6,408,427	-	6,408,427
Specific ownership taxes					982,479	-	982,479
Sales taxes					577,799	-	577,799
Other taxes					135,634	-	135,634
Investment earnings					706,652	-	706,652
Miscellaneous					720,469	-	720,469
Total general revenues and transfers					9,531,460	-	9,531,460
Change in Net Assets					2,850,026	(6,488)	2,843,538
Net Assets - January 1					17,599,809	65,875	17,665,684
Net Assets - December 31					\$ 20,449,835	\$ 59,387	\$ 20,509,222

The accompanying notes are an integral part of these financial statements.

**Park County, Colorado
Balance Sheets
Governmental Funds
December 31, 2007**

	<u>General Fund</u>	<u>Road and Bridge Fund</u>	<u>Human Services Fund</u>	<u>Capital Projects Fund</u>	<u>Non-major Governmental Funds</u>	<u>Total Governmental Funds</u>
Assets:						
Cash and investments - Unrestricted	\$ 3,940,732	\$ 3,449,895	\$ 1,326,197	\$ 225,684	\$ 2,757,554	\$ 11,700,062
Cash and investments - Restricted	-	-	-	-	233,452	233,452
Accounts receivable	227,452	-	397,226	-	222,410	847,088
Due from other governments	-	-	38,828	-	-	38,828
Due from other funds	126,687	-	-	-	-	126,687
Interest receivable	6,149	-	-	-	-	6,149
Prepaid expenses	12,836	-	-	-	10,000	22,836
Inventory	-	39,420	-	-	-	39,420
Property taxes receivable	6,052,177	183,799	408,396	-	170,199	6,814,571
Total assets	<u>\$ 10,366,033</u>	<u>\$ 3,673,114</u>	<u>\$ 2,170,647</u>	<u>\$ 225,684</u>	<u>\$ 3,393,615</u>	<u>\$ 19,829,093</u>
Liabilities and Fund Balances						
Liabilities:						
Accounts/vouchers payable	\$ 672,825	\$ 45,240	\$ 414,052	\$ -	\$ 31,440	\$ 1,163,557
Accrued expenses	29	-	-	-	1,189	1,218
Deferred revenue	-	-	-	-	-	-
Due to other funds	-	-	-	-	126,687	126,687
Deferred property taxes not collectible until subsequent year	6,052,177	183,799	408,396	-	170,199	6,814,571
Total liabilities	<u>6,725,031</u>	<u>229,039</u>	<u>822,448</u>	<u>-</u>	<u>329,515</u>	<u>8,106,033</u>
Fund balances:						
Reserved for:						
Emergencies	565,069	-	-	-	-	565,069
Capital projects	-	-	-	225,684	-	225,684
Debt service	-	-	-	-	940,731	940,731
Inventory and Prepaid expenses	12,836	39,420	-	-	-	52,256
Unreserved, reported in:						
General Fund	3,063,097	-	-	-	-	3,063,097
Special revenue funds	-	3,404,655	1,348,199	-	2,123,369	6,876,223
Total fund balances	<u>3,641,002</u>	<u>3,444,075</u>	<u>1,348,199</u>	<u>225,684</u>	<u>3,064,100</u>	<u>11,723,060</u>
Total liabilities and fund balances	<u>\$ 10,366,033</u>	<u>\$ 3,673,114</u>	<u>\$ 2,170,647</u>	<u>\$ 225,684</u>	<u>\$ 3,393,615</u>	

Amounts reported for governmental activities in the Statement of Net Assets are different because:

Capital assets used in governmental activities are not financial resources and, therefore, are not reported in the funds.	12,882,455
Internal service funds are used by management to charge the costs of health insurance to individual funds. The assets and liabilities of the internal service fund are included in governmental activities in the statement of net assets.	824,545
Long-term liabilities are not due and payable in the current period and, therefore, are not reported in the funds. These include bonds payable (\$2,730,000), Certificates of Participation (\$1,870,000) Capital Leases (\$366,570), Compensated Absences (\$414,588), Bond Issue Costs \$154,795, Deferred Debt Refunding Costs \$258,237, and Accrued Interest (\$12,099)	<u>(4,980,225)</u>

Net assets of governmental activities \$ 20,449,835

Park County, Colorado
Statement of Revenues, Expenditures and Changes in Fund Balances
Governmental Funds
For the Year Ended December 31, 2007

	<u>General Fund</u>	<u>Road and Bridge Fund</u>	<u>Human Services Fund</u>	<u>Capital Projects Fund</u>	<u>Non-major Funds</u>	<u>Total Governmental Funds</u>
Revenues:						
Taxes	\$ 6,584,747	\$ 198,634	\$ 441,621	\$ -	\$ 879,337	\$ 8,104,339
Licenses and permits	682,070	51,322	-	-	-	733,392
Intergovernmental revenue	2,850,431	5,079,815	2,065,684	-	483,782	10,479,712
Fines and forfeitures	207,286	-	-	-	-	207,286
Charges for services	1,087,469	-	-	-	-	1,087,469
Disposal of assets	69,534	8,349	-	-	-	77,883
Interest	587,401	-	-	-	119,251	706,652
Miscellaneous	302,548	86,891	3,605	-	249,542	642,586
Total revenues	<u>12,371,486</u>	<u>5,425,011</u>	<u>2,510,910</u>	<u>-</u>	<u>1,731,912</u>	<u>22,039,319</u>
Expenditures:						
General government	4,677,750	-	-	-	207,496	4,885,246
Health and welfare	445,667	-	2,253,128	-	188,285	2,887,080
Public safety	5,228,969	-	-	-	174,634	5,403,603
Culture and recreation	252,391	-	-	-	465,008	717,399
Public works	-	4,043,269	-	-	-	4,043,269
Judicial - District Attorney	270,137	-	-	-	-	270,137
Capital outlay	437,966	35,226	-	15,592	4,014	492,798
Debt service:						
Principal	-	1,513,914	-	-	445,000	1,958,914
Interest	-	112,521	-	-	156,301	268,822
Miscellaneous	-	-	-	15,000	2,300	17,300
Total expenditures	<u>11,312,880</u>	<u>5,704,930</u>	<u>2,253,128</u>	<u>30,592</u>	<u>1,643,038</u>	<u>20,944,568</u>
Excess (deficiency) of revenues over expenditures	<u>1,058,606</u>	<u>(279,919)</u>	<u>257,782</u>	<u>(30,592)</u>	<u>88,874</u>	<u>1,094,751</u>
Other financing sources (uses):						
Transfers in from other funds	-	-	-	81,304	800,553	881,857
Transfers (out) to other funds	(881,857)	-	(300,000)	-	-	(1,181,857)
Total other financing sources (uses)	<u>(881,857)</u>	<u>-</u>	<u>(300,000)</u>	<u>81,304</u>	<u>800,553</u>	<u>(300,000)</u>
Net change in fund balances	176,749	(279,919)	(42,218)	50,712	889,427	794,751
Fund balances - January 1	3,464,254	3,723,994	1,390,417	174,971	2,174,673	10,928,309
Fund balances - December 31	<u>\$ 3,641,003</u>	<u>\$ 3,444,075</u>	<u>\$ 1,348,199</u>	<u>\$ 225,683</u>	<u>\$ 3,064,100</u>	<u>\$ 11,723,060</u>

The accompanying notes are an integral part of these financial statements.

PARK COUNTY, COLORADO

RECONCILIATION OF THE STATEMENT OF REVENUES, EXPENDITURES
AND CHANGES IN FUND BALANCES - GOVERNMENTAL FUNDS
TO THE STATEMENT OF ACTIVITIES
Year Ended December 31, 2007

Amounts Reported for Governmental Activities in the Statement of Activities
are Different Because:

Net Changes in Fund Balances - Total Governmental Funds	\$ 794,751
Governmental funds report capital outlays as expenditures. However, in the statement of activities, the cost of those assets is allocated over their estimated useful lives and reported as depreciation expense. This is the amount by which depreciation \$1,251,847. exceeded capital outlay \$627,365., in the current period.	(624,482)
Repayment of long-term debt principal is an expenditure in the governmental funds, but the repayment reduces long-term liabilities in the statement of net assets. These include payments on bonds of \$265,000, Certificates of Participation \$180,000, Capital Leases \$1,513,914, and Change in Accrued Compensated Absences of \$43,177.	2,002,091
Some expenses reported in the statement of activities do not require the use of current resources and therefore are not reported as expenditures in governmental funds. These amortization of bond issue costs \$19,350, amortization of bond refunding costs \$32,279 change in accrued interest (\$926).	(50,703)
The Internal service fund is used by management to charge the cost of health insurance to individual funds. The net revenue (expense) of the internal service fund is reported with governmental activities.	<u>728,369</u>
Change in Net Assets of Governmental Activities	<u>\$ 2,850,026</u>

**Park County, Colorado
Statement of Net Assets
Proprietary Funds
December 31, 2007**

	Business-type Activities - Enterprise Fund	Governmental Activities - Internal Service Fund
Assets:		
Cash and cash equivalents	\$ 59,450	\$ 987,572
Prepaid expenses	-	-
Total assets	59,450	987,572
Liabilities:		
Accounts payable and accrued liabilities	63	163,027
Total liabilities	63	163,027
Net assets:		
Unrestricted	59,387	824,545
Total Net Assets	\$ 59,387	\$ 824,545

The accompanying notes are an integral part of these financial statements.

Park County, Colorado
Statement of Revenues, Expenses and Changes in Net Assets
Proprietary Funds
For the Year Ended December 31, 2007

	Business-type Activities - Enterprise Fund	Governmental Activities - Internal Service Fund
Revenues:		
Contributions	\$ -	\$ 2,123,558
Fee Revenue	38,910	-
Total revenues	38,910	2,123,558
Expenses:		
Culture and Recreation	\$ 45,398	-
Claims and related insurance expenses	-	1,717,200
Total expenses	45,398	1,717,200
 Operating income (loss)	 (6,488)	 406,358
Non-operating revenues:		
Interest	-	22,011
Total non-operating revenues	-	22,011
Income before transfers	(6,488)	428,369
Transfers in from other funds	-	300,000
Change in net assets	(6,488)	728,369
Net assets - January 1	65,875	96,176
Net assets - December 31	\$ 59,387	\$ 824,545

The accompanying notes are an integral part of these financial statements.

Park County, Colorado
Statement of Cash Flows
Proprietary Funds
For the Year Ended December 31, 2007

	Business-type Activities - Enterprise Fund	Governmental Activities - Internal Service Fund
Cash flows from operating activities:		
Cash received from customers	\$ 38,910	\$ 2,123,558
Cash paid for goods and services	(49,250)	(1,837,288)
Net cash provided by operating activities	(10,340)	286,270
Cash flows from noncapital financing activities		
Transfers in from other funds	-	300,000
Cash flows from investing activities:		
Interest received	-	22,011
Net cash provided by investing activities	-	22,011
Net increase in cash and cash equivalents	(10,340)	608,281
Cash and cash equivalents - January 1	69,790	379,291
Cash and cash equivalents - December 31	\$ 59,450	\$ 987,572
 Reconciliation of operating income (loss) to Net cash provided by operating activities:		
Operating income (loss)	\$ (6,488)	\$ 406,358
Adjustments to reconcile operating income (loss) to net cash provided by operating activities:		
Decrease in prepaid expenses	-	30,789
Increase (decrease) in accounts payable and accrued liabilities	(3,852)	(150,877)
Total adjustments	(3,852)	(120,088)
Net cash provided by operating activities	\$ (10,340)	\$ 286,270

The accompanying notes are an integral part of these financial statements.

Park County, Colorado

STATEMENT OF FIDUCIARY NET ASSETS
FIDUCIARY FUND
December 31, 2007

	<u>Agency Fund</u>
Assets	
Cash and Investments	<u>\$ 1,016,274</u>
Liabilities	
Due to other governmental agencies	\$ 903,439
Held by Public Trustee	<u>112,835</u>
Total liabilities	<u>\$ 1,016,274</u>

The accompanying notes are an integral part of the financial statements.

PARK COUNTY, COLORADO

NOTES TO FINANCIAL STATEMENTS

December 31, 2007

NOTE 1: SUMMARY OF SIGNIFICANT ACCOUNTING POLICIES

Park County, Colorado (the "County") is a political subdivision organized under the statutes of the State of Colorado. A three-member Board of Commissioners is responsible for setting policy, appointing administrative personnel and the adoption of an annual budget in accordance with state statutes.

The accounting policies of the County conform to generally accepted accounting principles as applicable to governments. Following is a summary of the more significant policies.

Reporting Entity

In accordance with governmental accounting standards, the County has considered the possibility of inclusion of additional entities in its financial statements.

The definition of the reporting entity is based primarily on financial accountability. The County is financially accountable for organizations that make up its legal entity. It is also financially accountable for legally separate organizations if County officials appoint a voting majority of the organizations governing body and either it is able to impose its will on that organization or there is a potential for the organization to provide specific financial benefits to, or to impose specific financial burdens on, the County. The County may also be financially accountable for organizations that are fiscally dependent upon it.

Based on the criteria above, the County is not financially accountable for any other entity and therefore does not include additional organizations in its reporting entity.

Government-Wide and Fund Financial Statements

The government-wide financial statements (i.e., the statement of net assets and the statement of activities) report information on all of the nonfiduciary activities of the County. For the most part, the effect of interfund activity has been removed from these statements. *Governmental activities*, which normally are supported by taxes and intergovernmental revenues, are reported separately from *business-type activities*, which rely to a significant extent on fees and charges for support.

The statement of activities demonstrates the degree to which the direct expenses of the given function or segment are offset by program revenues. *Direct expenses* are those that are clearly identifiable with a specific function or segment. *Program revenues* include 1) charges to customers or applicants who purchase, use, or directly benefit from goods, services, or privileges provided by a given function or segment and 2) grants and contributions that are restricted to meeting the operational or capital requirements of a particular function or segment. Taxes and other items not properly included among program revenues are reported instead as *general revenues*.

PARK COUNTY, COLORADO
NOTES TO FINANCIAL STATEMENTS
December 31, 2007

NOTE 1: SUMMARY OF SIGNIFICANT ACCOUNTING POLICIES (Continued)

Government-Wide and Fund Financial Statements (Continued)

Separate financial statements are provided for governmental funds and proprietary funds. Major individual governmental funds are reported as separate columns in the fund financial statements.

Measurement Focus, Basis of Accounting, and Financial Statement Presentation

The government-wide financial statements are reported using the *economic resources measurement focus* and the *accrual basis of accounting*, as are the proprietary fund financial statements. Revenues are recorded when earned and expenses are recorded when the liability is incurred, regardless of the timing of related cash flows. Property taxes are recognized as revenues in the year for which they are levied. Grants and similar items are recognized as revenue as soon as all eligibility requirements imposed by the provider have been met.

Governmental fund financial statements are reported using the current *financial resources measurement focus* and the *modified accrual basis of accounting*. Revenues are recognized as soon as they are both measurable and available. Revenues are considered to be *available* when they are collected within the current period or soon enough thereafter to pay liabilities of the current period. For this purpose, the County considers revenues to be available if they are collected within 60 days of the end of the current fiscal period.

Property taxes, specific ownership taxes, grants, and interest associated with the current fiscal period are all considered to be susceptible to accrual and so have been recognized as revenues of the current fiscal period. All other revenue items are considered to be measurable and available only when cash is received by the County.

Expenditures generally are recorded when a liability is incurred, as under accrual accounting. However, debt service expenditures, as well as expenditures related to compensated absences, are recorded only when payment is due.

Private-sector standards of accounting and financial reporting issued prior to December 1, 1989, generally are followed in both the government-wide and proprietary (enterprise) fund financial statements to the extent that those standards do not conflict with or contradict guidance of the Governmental Accounting Standards Board. Governments also have the *option* of following subsequent private-sector guidance for their business-type activities and enterprise funds, subject to this same limitation. The County has elected not to follow subsequent private-sector guidance.

Proprietary funds distinguish operating revenues and expenses from nonoperating items. Operating revenues and expenses generally result from providing services and producing and delivering goods in connection with a proprietary fund's principal ongoing operations. Operating expenses for enterprise funds include the cost of sales and services, administrative expenses, and depreciation on capital assets. All revenues and expenses not meeting this definition are reported as nonoperating revenues and expenses.

PARK COUNTY, COLORADO
NOTES TO FINANCIAL STATEMENTS
December 31, 2007

NOTE 1: SUMMARY OF SIGNIFICANT ACCOUNTING POLICIES (Continued)

Measurement Focus, Basis of Accounting, and Financial Statement Presentation
(Continued)

When both restricted and unrestricted resources are available for use, it is the County's practice to use restricted resources first, then unrestricted resources as they are needed.

In the fund financial statements, the County reports the following major governmental funds:

The *General Fund* is the County's primary operating fund. It accounts for all financial resources of the County, except those required to be accounted for in another fund.

The *Road and Bridge Fund* accounts for the County's share of State revenues that are legally restricted for the maintenance of highways and roads within the County's boundaries and to account for property taxes and other revenues restricted for highway and road purposes.

The *Human Services Fund* administers the County's State and Federal revenues that are restricted for providing of health and human services to the residents of the County.

The *Capital Projects Fund* accumulates funds for major equipment and other capital additions.

Additionally, the County reports the following non-major fund types:

The *Recreation Enterprise Fund* accounts for the financial activities associated with the County's recreational fishing program.

The *Internal Service Fund* is used to account for the partially self-insured health insurance program for County employees. These services are provided to other County funds and departments on a cost reimbursement basis.

Agency Funds are used to account for the collection and distribution of property and other taxes between the County's funds and other governments and agencies. Agency Funds are also used to account for the activities of the County's Public Trustee and segregate these activities into a separate fund as required by state statutes.

PARK COUNTY, COLORADO
NOTES TO FINANCIAL STATEMENTS
December 31, 2007

NOTE 1: SUMMARY OF SIGNIFICANT ACCOUNTING POLICIES (Continued)

Cash and Investments

Cash equivalents include investments with original maturities of three months or less.

Investments are recorded at fair value.

Receivables

Receivables are reported net of an allowance for uncollectible accounts.

Inventories

Inventories consist of supplies for the County's use are carried at cost using the first-in, first-out method. Inventories are reported net of an allowance for obsolescence.

Capital Assets

Capital assets, which include property and equipment, are reported in the applicable governmental or business-type activities columns in the government-wide financial statements. Capital assets are defined by the County as assets with an initial, individual cost of more than \$5,000 and an estimated useful life in excess of one year. Such assets are recorded at historical cost or estimated historical cost if purchased or constructed. Donated capital assets are recorded at estimated fair market value at the date of donation.

The costs of normal maintenance and repairs that do not add to the value of the asset or materially extend assets' lives are not capitalized.

Property and equipment of the County is depreciated using the straight line method over the following estimated useful lives:

Land Improvements	15 years
Buildings and Improvements	20 - 40 years
Roads	50 years
Equipment	3 - 10 years
Vehicles	5 years

Compensated Absences

Employees of the County are allowed to accumulate unused vacation time at the rate of 8 hours per month for zero to five years of service, 12 hours per month for six to fourteen years of service and 16 hours a month for fifteen or more years of service. An employee can carry over a maximum of their annual amount. These maximums are 96 hours, 144 hours and 192 hours for the three levels of experience as noted above.

Employees accrue paid sick leave at the rate of 8 hours per month. They may accrue a maximum of 480 hours. As sick leave does not vest, no liability is recorded.

PARK COUNTY, COLORADO
NOTES TO FINANCIAL STATEMENTS
December 31, 2007

NOTE 1: SUMMARY OF SIGNIFICANT ACCOUNTING POLICIES (Continued)

Compensated Absences (Continued)

These compensated absences are recognized as current salary costs when earned in the proprietary fund types and when due in the governmental fund types. A long-term liability has been recorded in the government-wide financial statements for the accrued compensated absences.

Long-Term Obligations

In the government-wide financial statements, long-term debt and other long-term obligations are reported as liabilities in the governmental activities statement of net assets. Bond premiums and discounts are deferred and amortized over the life of the bonds using the straight-line method.

In the fund financial statements, governmental fund types recognize bond premiums and discounts, as well as bond issuance costs, during the current period. The face amount of debt issued is reported as other financing sources. Premiums received on debt issuances are reported as other financing sources while discounts on debt issuances are reported as other financing uses. Issuance costs, whether or not withheld from the actual debt proceeds received, are reported as debt service expenditures.

Property Taxes

Property taxes are levied on or before December 15 and attach as an enforceable lien on property on January 1. Taxes are payable in full on April 30 or in two installments on February 28 and June 15. The County Treasurer's office collects property taxes and remits to them on a monthly basis. Unpaid amounts and the accrued interest thereon become delinquent on June 16.

Since property tax revenues are collected in arrears during the succeeding year, a receivable and corresponding deferred revenue are recorded at December 31. As the tax is collected in the succeeding year, the deferred revenue is recognized as revenue and the receivable is reduced.

Comparative Data

Comparative total data for the prior year has been presented in the accompanying financial statements in order to provide an understanding of changes in the County's financial position and operations. However, complete comparative data in accordance with generally accepted accounting principles has not been presented since its inclusion would make the financial statements unduly complex and difficult to read.

Data in these columns do not present financial position or results of operations in conformity with generally accepted accounting principles. Neither is such data comparable to a consolidation. Interfund eliminations have not been made in the aggregation of this data.

PARK COUNTY, COLORADO
NOTES TO FINANCIAL STATEMENTS
December 31, 2007

NOTE 2: STEWARDSHIP, COMPLIANCE AND ACCOUNTABILITY

Budgets and Budgetary Accounting

The County follows these procedures in establishing the budgetary data reflected in the financial statements:

- \$ Prior to the August 2006, the County Assessor sent to the County a certified assessed valuation of all property in the County.
- \$ On or before October 2006, the Finance Director submitted to the County Commissioners a recommended budget which detailed the necessary property taxes needed along with other available resources to meet the County's operating requirements.
- \$ Prior to December 15, 2006, the County computed and certified to the County Commissioners a rate of levy that derived the necessary property taxes as computed in the proposed budget.
- \$ After required publication of "Notice of Proposed Budget" and a public hearing , the County adopted the proposed budget and an appropriating resolution, which legally appropriated expenditures for the coming year.
- \$ After adoption of the budget resolution, the County may make the following changes: a) it may transfer appropriated money between funds; b) approve supplemental appropriations to the extent of revenues in excess of estimated revenues in the budget; c) approve emergency appropriations; and d) reduce appropriations for which originally estimated revenues are insufficient.
- \$ Budgets are legally adopted for all funds of the County. All budgets are adopted on a basis consistent with generally accepted accounting principles (GAAP).
- \$ Budgeted amounts in the financial statements are as originally adopted or as amended by the Board of County Commissioners. All appropriations lapse at year end. Colorado governments may not exceed budgeted appropriations by fund.

NOTE 3: CASH AND INVESTMENTS

A summary of the primary government cash and investments as of December 31, 2007 follows:

Petty Cash	\$ 3,250
Cash Deposits	1,773,030
Investments	<u>12,220,530</u>
Total	<u>\$ 13,996,810</u>

PARK COUNTY, COLORADO
 NOTES TO FINANCIAL STATEMENTS
 December 31, 2007

NOTE 3: CASH AND INVESTMENTS (Continued)

The above amounts are classified in the financial statements as follows:

Governmental activities - unrestricted	\$ 12,687,634
Governmental activities – restricted	233,452
Business-type activities	59,450
Agency Fund	<u>1,016,274</u>
Total	<u>\$ 13,996,810</u>

Deposits

Custodial Credit Risk – Deposits

Custodial credit risk is the risk that in the event of a bank failure, the government's deposits may not be returned to it. The Colorado Public Deposit Protection Act (PDPA) requires that all units of local government deposit cash in eligible public depositories. Eligibility is determined by state regulations. At December 31, 2007, State regulatory commissioners have indicated that all financial institutions holding deposits for the County are eligible public depositories. Amounts on deposit in excess of federal insurance levels must be collateralized by eligible collateral as determined by the PDPA. PDPA allows the financial institution to create a single collateral pool for all public funds held. The pool is to be maintained by another institution, or held in trust for all the uninsured public deposits as a group. The market value of the collateral must be at least equal to 102% of the uninsured deposits. The County has no policy regarding custodial credit risk for deposits.

At December 31, 2007, the County had deposits with financial institutions with a carrying amount of \$1,772,971. The bank balances with the financial institutions were \$2,008,981. Of these balances, \$1,672,971 was covered by federal depository insurance and \$613,371 was covered by collateral held by authorized escrow agents in the financial institutions name (PDPA).

Investments

As of December 31, 2007, the County has the following investments:

	<u>Fair Value</u>	<u>Investment Maturity (Years)</u>	
		<u>Less than One Year</u>	<u>1-5 Years</u>
Mutual Funds	\$ 5,312,634	\$ 5,312,634	\$ -
Government Agencies	2,550,209	700,000	1,850,209
CSAFE	2,226,741	2,226,741	-
Colostrust	<u>2,130,946</u>	<u>2,130,946</u>	<u>-</u>
Totals	<u>\$ 12,220,530</u>	<u>\$ 10,370,321</u>	<u>\$ 1,850,209</u>

PARK COUNTY, COLORADO

NOTES TO FINANCIAL STATEMENTS

December 31, 2007

NOTE 3: CASH AND INVESTMENTS (Continued)

Interest Rate Risk

The County does not have a formal investment policy that limits investment maturities as a means of managing its exposure to fair value losses arising from increasing interest rates.

Credit Risk

The County does not have a formal policy related to credit risk of investments. Colorado statutes specify in which instruments the units of local government may invest which includes:

- Obligations of the United States and certain U.S. government agency securities
- General obligation and revenue bonds of U.S. local government entities
- Bankers' acceptances of certain banks
- Local government investment pools
- Written repurchase agreements collateralized by certain authorized securities
- Certain money market funds
- Guaranteed investment contracts

The above investments are authorized for all funds and fund types used by Colorado governments. The mutual funds have ratings of AAAM and Aaa from Standard and Poor and Moody's respectively. The Government Agency securities have a rating of AAA from Standard and Poor.

The County had invested \$4,357,687 in the Colorado Government Liquid Asset Trust and Colorado Surplus Asset Fund Trust (COLOTRUST and CSAFE); investment vehicles established for local government entities in Colorado to pool surplus funds and are registered with the State Securities Commissioner. The Funds operate similarly to a money market fund and each share is equal in value to \$1.00. Investments consist of U.S. Treasury and U.S. Agency securities and repurchase agreements collateralized by U.S. Treasury and U.S. Agency securities. A designated custodial bank provides safekeeping and depository services in connection with the direct investment and withdrawal functions. Substantially all securities owned are held by the Federal Reserve Bank in the account maintained for the custodial bank. The custodian's internal records identify the investments owned by the entities. Colotrust is rated Aaa and CSAFE is rated AAAM by Standard and Poor.

Restricted Cash

Cash in the amount of \$233,452 is restricted in the Debt Service Fund as a required reserve for the County's 2004 Certificates of Participation.

PARK COUNTY, COLORADO
 NOTES TO FINANCIAL STATEMENTS
 December 31, 2007

NOTE 4: CAPITAL ASSETS

Capital assets activity for the year ended December 31, 2007 is summarized below:

	<u>Balances</u> <u>12/31/06</u>	<u>Additions</u>	<u>Deletions</u>	<u>Balances</u> <u>12/31/07</u>
Governmental Activities				
Capital Assets, not depreciated				
Land and Easements	\$ 1,957,426	\$ -	\$ -	\$ 1,957,426
Capital Assets, depreciated				
Roads	746,481	-	-	746,481
Buildings and Improvements	12,843,840	353,716	-	13,197,556
Equipment	2,199,941	88,285	-	2,288,226
Vehicles	<u>12,446,089</u>	<u>185,365</u>	<u>104,237</u>	<u>12,527,217</u>
Total Capital Assets, depreciated	<u>28,236,351</u>	<u>627,365</u>	<u>104,237</u>	<u>28,759,479</u>
Less Accumulated Depreciation				
Roads	87,508	14,930	-	102,438
Buildings and Improvements	6,165,535	323,617	-	6,489,152
Equipment	896,463	198,871	-	1,095,334
Vehicles	<u>9,537,334</u>	<u>714,429</u>	<u>104,237</u>	<u>10,147,526</u>
Total Accumulated Depreciation	<u>16,686,840</u>	<u>1,251,847</u>	<u>104,237</u>	<u>17,834,450</u>
Total Capital Assets, depreciated, net	<u>11,549,511</u>	<u>(624,482)</u>	<u>-</u>	<u>10,925,029</u>
Governmental Activities, Capital Assets, Net	<u>\$ 13,506,937</u>	<u>\$ (624,482)</u>	<u>\$ -</u>	<u>\$ 12,882,455</u>

Depreciation expense was charged to functions/programs of the County as follows:

Governmental Activities	
General Government	\$ 254,676
Culture an Recreation	22,481
Health and Welfare	20,233
Public Works	564,350
Public Safety	<u>390,107</u>
Total	<u>\$ 1,251,847</u>

PARK COUNTY, COLORADO
 NOTES TO FINANCIAL STATEMENTS
 December 31, 2007

NOTE 5: LONG-TERM DEBT

Governmental Activities

Following is a summary of long-term debt transactions for the governmental activities for the year ended December 31, 2007.

	<u>Balance</u> <u>12/31/06</u>	<u>Additions</u>	<u>Payments</u>	<u>Balance</u> <u>12/31/07</u>	<u>Due In</u> <u>One Year</u>
Capital Improvement					
Bonds	\$ 2,995,000	\$ -	\$ 265,000	\$ 2,730,000	\$ 270,000
Certificate of Participation	2,050,000	-	180,000	1,870,000	185,000
Capital Leases	1,880,485	-	1,513,915	366,570	260,311
Compensated Absences	<u>457,764</u>	<u>478,006</u>	<u>521,182</u>	<u>414,588</u>	<u>188,814</u>
Total	<u>\$ 7,383,249</u>	<u>\$ 478,006</u>	<u>\$ 2,580,097</u>	<u>\$ 5,381,158</u>	<u>\$ 904,125</u>

In December of 1996, the County issued \$4,450,000 Jail Facility Capital Improvement Bonds. Bond proceeds were used to acquire and improve the County's jail facilities. Interest accrues at rates ranging from 3.7% to 5.4% per annum and is payable semi-annually on June 1 and December 1. Principal payments are due annually on December 1, through 2006. All maturities due after 2006 were advance refunded with the 2004 Jail Refunding Capital Improvement Bonds.

In March of 2004, the County issued \$3,145,000 Jail Refunding Capital Improvement Bonds. Bond proceeds were used to advance refund a portion of the 1996 Jail Facility Capital Improvement Bonds. Interest accrues at rates ranging from 2.5% to 3.65% per annum and is payable semi-annually on June 1 and December 1. Principal payments are due annually on December 1, through 2015.

The County issued \$2,310,000 of certificates of participation in 2004 to provide funds for the expansion of the County's jail facility in additions to funding the establishment of a reserve fund. The Certificates have a stated interest rate ranging from 2.5% to 3.7% per annum and is payable semi-annually on June 1 and December 1. Principal payments are due annually on December 1, through 2015.

The County has entered into several capital lease agreements to purchase equipment. These leases are paid from revenues of the Road and Bridge Fund. The lease requires interest to be paid ranging from 4.25% to 6.04%. These leases mature from 2007 to 2009.

Compensated absences are expected to be paid by revenues generated by the General Fund.

PARK COUNTY, COLORADO
 NOTES TO FINANCIAL STATEMENTS
 December 31, 2007

NOTE 5: LONG-TERM DEBT (Continued)

Future Debt Service Requirements

Annual debt service requirements for the outstanding bonds and certificates at December 31, 2007 are as follows:

<u>Year Ended December 31,</u>	<u>Principal</u>	<u>Interest</u>	<u>Total</u>
2008	\$ 455,000	\$ 145,176	\$ 600,176
2009	475,000	133,801	608,801
2010	480,000	121,927	601,927
2011	495,000	108,726	603,726
2012	510,000	93,876	603,876
2013-2015	<u>2,185,000</u>	<u>178,247</u>	<u>2,363,247</u>
Total Debt Service Requirements	<u>\$4,600,000</u>	<u>\$ 781,753</u>	<u>\$5,381,753</u>

Debt service requirements for the capital leases are as follows:

<u>Year Ended December 31,</u>	
2008	\$ 278,684
2009	<u>111,307</u>
Total Payments	389,991
Less: Amounts representing interest	<u>(23,421)</u>
Total	<u>\$ 366,570</u>

Assets in the amount of \$2,929,422 have been capitalized in the Government-wide financial statements.

NOTE 6: INTERFUND AMOUNTS

The Grant Fund owed the General Fund \$126,687 for expenditures that were paid by the General Fund on the Grant Fund's account.

Interfund transfers at December 31, 2007, were comprised of the following:

<u>Transfers In</u>	<u>Transfers Out</u>	<u>Amount</u>
Capital Projects	General	\$ 81,304
Debt Service	General	602,604
Library	General	197,949
Self-Insurance	Human Services	<u>300,000</u>
Total		<u>\$ 1,181,857</u>

PARK COUNTY, COLORADO

NOTES TO FINANCIAL STATEMENTS

December 31, 2007

NOTE 6: INTERFUND AMOUNTS (Continued)

Transfers are made from the General Fund to fund capital projects, assist in making debt service payments, fund library operations. The transfer from the Human Services Fund was made to supplement the risk management fund due to increasing claims and costs.

NOTE 7: RISK MANAGEMENT

The County is exposed to various risks of loss related to torts; theft of, damage to, and destruction of assets; errors and omissions; injuries to employees; and natural disasters. The County has acquired commercial coverage for these risks and claims, if any, are not expected to exceed the commercial insurance coverage. The County has addressed these risks in the following manner:

1. County Workers' Compensation Pool

The County is exposed to various risks of loss related to injuries of employees while on the job. The County purchases commercial workman's compensation insurance from Pinnacol Assurance, a quasi-public authority of the State of Colorado. Settled claims resulting from these risks have not exceeded coverage in any of the past five years and coverage limits remain unchanged from the prior year.

2. Colorado Counties Casualty and Property Pool

The County is exposed to various risks of loss related to property and casualty losses. The County has joined together with other counties in the State of Colorado to form the Colorado Counties Casualty and Property Pool ("CAPP"), a public entity risk pool currently operation as a common risk management and insurance program for member counties. The County pays an annual contribution to CAPP for its property and casualty insurance coverage. The intergovernmental agreement of formulation of CAPP provides that the Pool will be financially self-sustaining through member contributions and additional assessments, if necessary, and the Pool will purchase excess insurance through commercial companies for members' claims in excess of a specified self-insured retention, which is determined each policy year.

3. Self Insurance Plan

The County has established a self-insured health benefit plan. The plan is administered by BlueCross/Blue Shield of Colorado and is funded through a combination of employee contributions and contributions made by the County. Claims are paid from funds accumulated through these contributions. Under the terms of contract with Blue Cross/ Blue Shield the plan has a stop-loss coverage for individual occurrences in excess of \$100,000 and becomes fully insured at any time claims exceed 110% of the retained premiums of the plan.

PARK COUNTY, COLORADO
 NOTES TO FINANCIAL STATEMENTS
 December 31, 2007

NOTE 7: RISK MANAGEMENT (Continued)

Changes in the claims liability amounts in 2007:

	<u>2007</u>	<u>2006</u>
Balance January 1,	\$ 313,904	\$ 241,374
Claims and Changes in Estimates	1,517,526	1,595,746
Claims Paid	<u>1,668,403</u>	<u>1,523,216</u>
Balance December 31,	<u>\$ 163,027</u>	<u>\$ 313,904</u>

NOTE 8: RETIREMENT COMMITMENTS

Employees Pension Plan

The County contributes to a multiple employer defined contribution retirement plan administered by the Colorado Officials and Employees Retirement Association. Every employee who is employed by the County for more than one year is eligible to participate in the Plan. Both the County and the employee contribute 3% of the employee's base salary. Plan provisions are established and may be amended by County Commissioners. During the year ended December 31, 2007, employer and employee contributions were \$207,496, equal to their required contributions.

Participants vest in employer contributions and in earnings, losses, and changes in fair market value of Plan assets at a rate of 20% for each full twelve months of participating in the Plan. Participants are immediately vested in their own contributions and earnings.

NOTE 9: COMMITMENTS AND CONTINGENCIES

Claims and Judgments

The County participates in a number of federal and state programs that are fully or partially funded by grants received from other governmental units. Expenditures financed by grants are subject to audit by the appropriate grantor government. If expenditures are disallowed due to noncompliance with grant program regulations, the County may be required to reimburse the grantor government. As of December 31, 2007, significant amounts of grant expenditures have not been audited but the County believes that disallowed expenditures, if any, based on subsequent audits will not have a material effect on the overall financial position of the County.

PARK COUNTY, COLORADO
NOTES TO FINANCIAL STATEMENTS
December 31, 2007

NOTE 9: COMMITMENTS AND CONTINGENCIES (Continued)

Tabor Amendment

Colorado voters passed an amendment to the State Constitution, Article X, Section 20, which has several limitations, including revenue raising, spending abilities, and other specific requirements of state and local government. In November 1995, voters within the County approved the collection, retention and expenditure of grants and revenues generated from the operation of the jail commencing on January 1, 1995, and subsequent years.

In November 1998, voters within the County approved the collection, retention and expenditure of interest and investment earnings, revenue from federal, other local and district governmental entities commencing on January 1, 1999, and subsequent years. The County has established an emergency reserve, representing 3% of qualifying expenditures, as required by the Amendment. At December 31, 2007, the emergency reserve of \$565,069 was recorded as a reservation of Fund Balance in the General Fund.

Litigation

The County is involved in various lawsuits. The outcome of this litigation cannot be determined at this time.

REQUIRED SUPPLEMENTARY INFORMATION

Park County, Colorado
General Fund
Budgetary Comparison Schedule
For the Year Ended December 31, 2007
(With Comparative Actual Amounts for 2006)

	<u>2007</u>			<u>Final Budget</u>	<u>2006</u>
	<u>Original</u>	<u>Final</u>	<u>Actual</u>	<u>Variance</u>	<u>Actual</u>
	<u>Budget</u>	<u>Budget</u>		<u>Positive</u>	
				<u>(Negative)</u>	
Revenues:					
Property tax	\$ 5,693,219	\$ 5,693,219	\$ 5,693,855	\$ 636	\$ 5,330,257
Specific ownership tax	800,000	800,000	872,927	72,927	828,995
Other tax	9,000	9,000	17,965	8,965	14,614
Licenses and permits	680,809	680,809	682,070	1,261	753,259
Intergovernmental	3,988,818	4,005,285	2,850,431	(1,154,854)	4,070,763
Fines and forfeitures	200,050	200,050	207,286	7,236	217,141
Charges for services	1,056,617	1,084,867	1,087,469	2,602	1,056,246
Disposal of assets	-	43,313	69,534	26,221	114,210
Interest	319,000	319,000	587,401	268,401	459,086
Other	75,060	75,560	302,548	226,988	154,785
Total revenues	<u>12,822,573</u>	<u>12,911,103</u>	<u>12,371,486</u>	<u>(539,617)</u>	<u>12,999,356</u>
Expenditures:					
General government	5,951,743	5,966,589	4,677,750	1,288,839	4,660,438
Health and welfare	510,367	527,181	445,667	81,514	490,086
Public safety	5,572,708	5,638,670	5,228,969	409,701	5,428,750
Culture and recreation	331,640	336,745	252,391	84,354	241,607
Judicial - District Attorney	270,144	270,144	270,137	7	260,781
Highways & Streets	-	-	-	-	10,000
Capital outlay	49,800	152,567	437,966	(285,399)	501,161
Debt service:					
Principal	-	-	-	-	-
Interest	-	-	-	-	-
Total expenditures	<u>12,686,402</u>	<u>12,891,896</u>	<u>11,312,880</u>	<u>1,579,016</u>	<u>11,592,823</u>
Excess of revenues over expenditures	<u>136,171</u>	<u>19,207</u>	<u>1,058,606</u>	<u>1,039,399</u>	<u>1,406,533</u>
Other financing (uses):					
Transfers (out)	(838,544)	(881,857)	(881,857)	-	(1,198,812)
Total other financing (uses)	<u>(838,544)</u>	<u>(881,857)</u>	<u>(881,857)</u>	<u>-</u>	<u>(1,198,812)</u>
Net change in fund balances	(702,373)	(862,650)	176,749	1,039,399	207,721
Fund balances - January 1	<u>2,740,752</u>	<u>3,464,254</u>	<u>3,464,254</u>	<u>-</u>	<u>3,256,533</u>
Fund balances - December 31	<u>\$ 2,038,379</u>	<u>\$ 2,601,604</u>	<u>\$ 3,641,003</u>	<u>\$ 1,039,399</u>	<u>\$ 3,464,254</u>

See the accompanying independent auditors' report.

**Park County, Colorado
Road and Bridge Fund
Budgetary Comparison Schedule
For the Year Ended December 31, 2007
(With Comparative Actual Amounts for 2006)**

	<u>2007</u>			<u>Final Budget Variance Positive (Negative)</u>	<u>2006</u>
	<u>Original Budget</u>	<u>Final Budget</u>	<u>Actual</u>		<u>Actual</u>
Revenues:					
Property tax	\$ 173,144	\$ 173,144	\$ 172,228	\$ (916)	\$ 157,996
Specific ownership tax	23,000	23,000	26,406	3,406	25,086
Licenses and permits	117,000	167,000	51,322	(115,678)	136,925
Intergovernmental	4,335,000	4,635,000	5,079,815	444,815	4,766,738
Disposal of assets	-	-	8,349	8,349	19,065
Miscellaneous revenues	2,200	2,200	86,891	84,691	6,851
Total revenues	<u>4,650,344</u>	<u>5,000,344</u>	<u>5,425,011</u>	<u>424,667</u>	<u>5,112,661</u>
Expenditures:					
Public works	4,620,058	4,820,058	4,043,269	776,789	3,563,763
Capital outlay	-	-	35,226	(35,226)	195,271
Debt service:					
Principal	694,821	1,513,915	1,513,914	1	667,773
Interest	91,997	112,630	112,521	109	114,654
Total expenditures	<u>5,406,876</u>	<u>6,446,603</u>	<u>5,704,930</u>	<u>741,673</u>	<u>4,541,461</u>
Excess (deficiency) of revenues over expenditures	<u>(756,532)</u>	<u>(1,446,259)</u>	<u>(279,919)</u>	<u>1,166,340</u>	<u>571,200</u>
Other financing sources:					
Proceeds from capital leases	-	-	-	-	-
Total other financing sources	<u>-</u>	<u>-</u>	<u>-</u>	<u>-</u>	<u>-</u>
Net change in fund balances	(756,532)	(1,446,259)	(279,919)	1,166,340	571,200
Fund balances - January 1	<u>3,354,967</u>	<u>3,723,994</u>	<u>3,723,994</u>	<u>-</u>	<u>3,152,794</u>
Fund balances - December 31	<u>\$ 2,598,435</u>	<u>\$ 2,277,735</u>	<u>\$ 3,444,075</u>	<u>\$ 1,166,340</u>	<u>\$ 3,723,994</u>

See the accompanying independent auditors' report.

**Park County, Colorado
Human Services Fund
Budgetary Comparison Schedule
For the Year Ended December 31, 2007
(With Comparative Actual Amounts for 2006)**

	<u>2007</u>			<u>Variance</u>	<u>2006</u>
	<u>Original Budget</u>	<u>Final Budget</u>	<u>Actual</u>	<u>Positive (Negative)</u>	<u>Actual</u>
Revenues:					
Property tax	\$ 384,592	\$ 384,592	\$ 382,917	\$ (1,675)	\$ 358,427
Specific ownership tax	54,000	54,000	58,704	4,704	55,747
Intergovernmental	2,993,309	2,993,309	2,065,684	(927,625)	2,093,750
Miscellaneous	1,300	1,300	3,605	2,305	6,441
Total revenues	<u>3,433,201</u>	<u>3,433,201</u>	<u>2,510,910</u>	<u>(922,291)</u>	<u>2,514,365</u>
Expenditures:					
Health and welfare	3,365,676	3,365,676	2,253,128	1,112,548	2,276,101
Total expenditures	<u>3,365,676</u>	<u>3,365,676</u>	<u>2,253,128</u>	<u>1,112,548</u>	<u>2,276,101</u>
Excess (deficiency) of revenues over expenditures	<u>67,525</u>	<u>67,525</u>	<u>257,782</u>	<u>190,257</u>	<u>238,264</u>
Other financing (uses):					
Transfers out	(100,000)	(300,000)	(300,000)	-	(100,000)
Total other financing(uses)	<u>(100,000)</u>	<u>(300,000)</u>	<u>(300,000)</u>	<u>-</u>	<u>(100,000)</u>
Net change in fund balance	(32,475)	(232,475)	(42,218)	190,257	138,264
Fund balances - January 1	<u>1,233,249</u>	<u>1,390,417</u>	<u>1,390,417</u>	<u>-</u>	<u>1,252,153</u>
Fund balances - December 31	<u>\$ 1,200,774</u>	<u>\$ 1,157,942</u>	<u>\$ 1,348,199</u>	<u>\$ 380,514</u>	<u>\$ 1,390,417</u>

See the accompanying independent auditors' report.

COMBINING AND INDIVIDUAL FUND STATEMENTS AND SCHEDULES

Park County, Colorado
Combining Balance Sheet
Non-major Governmental Funds
December 31, 2007

	Special Revenue							Debt Service	Total Non-major Governmental Funds		
	Conservation Trust Fund	Grant Fund	Employee Retirement Fund	Sales Tax Trust Fund	Library Fund	Sheriff's Seizure and Program Fund	E-911 Authority Fund	1041 Fee Fund	Debt Service Fund	2007	2006
	Assets:										
Cash and investments - Unrestricted	\$ 124,456	\$ -	\$ 144,754	\$ 1,259,195	\$ 113,338	\$ 57,767	\$ 271,589	\$ 79,176	\$ 707,279	\$ 2,757,554	\$ 1,874,116
Cash and investments - Restricted	-	-	-	-	-	-	-	-	233,452	233,452	233,345
Accounts receivable	-	128,830	-	85,193	-	1,038	7,349	-	-	222,410	135,767
Prepaid Expenses	-	-	-	-	-	-	10,000	-	-	10,000	150
Property taxes receivable	-	-	170,199	-	-	-	-	-	-	170,199	160,100
Total assets	\$ 124,456	\$ 128,830	\$ 314,953	\$ 1,344,388	\$ 113,338	\$ 58,805	\$ 288,938	\$ 79,176	\$ 940,731	\$ 3,393,615	\$ 2,403,478
Liabilities:											
Accounts payable	\$ 5,408	\$ 954	\$ -	\$ 9,372	\$ 5,177	\$ 87	\$ 10,442	\$ -	\$ -	\$ 31,440	\$ 24,091
Accrued expenses	-	1,189	-	-	-	-	-	-	-	1,189	1,189
Deferred revenue	-	-	-	-	-	-	-	-	-	-	-
Due to Other Funds	-	126,687	-	-	-	-	-	-	-	126,687	43,425
Deferred property taxes not collectible until subsequent year	-	-	170,199	-	-	-	-	-	-	170,199	160,100
Total liabilities	5,408	128,830	170,199	9,372	5,177	87	10,442	-	-	329,515	228,805
Fund balances:											
Reserved for debt service	-	-	-	-	-	-	-	-	940,731	940,731	878,895
Reserved for prepaid expenses	-	-	-	-	-	-	-	-	-	-	-
Unreserved	119,048	-	144,754	1,335,016	108,161	58,718	278,496	79,176	-	2,123,369	1,295,778
Total fund balances	119,048	-	144,754	1,335,016	108,161	58,718	278,496	79,176	940,731	3,064,100	2,174,673
Total liabilities and fund balances	\$ 124,456	\$ 128,830	\$ 314,953	\$ 1,344,388	\$ 113,338	\$ 58,805	\$ 288,938	\$ 79,176	\$ 940,731	\$ 3,393,615	\$ 2,403,478

See the accompanying independent auditors' report.

Park County, Colorado
Combining Statement of Revenues, Expenditures and Changes in Fund Balances
Non-major Governmental Funds
For the Year Ended December 31, 2007

	Special Revenue							Debt Service	Total Non-major Governmental Funds		
	Conservation Trust Fund	Grant Fund	Employee Retirement Fund	Sales Tax Trust Fund	Library Fund	Sheriff's Seizure and Program Fund	E-911 Authority Fund	1041 Fee Fund	Debt Service Fund	2007	2006
Revenues:											
Property tax	\$ -	\$ -	\$ 159,427	\$ -	\$ -	\$ -	\$ -	\$ -	\$ -	\$ 159,427	\$ 149,336
Specific ownership tax	-	-	24,442	-	-	-	-	-	-	24,442	23,228
Sales tax	-	-	-	577,799	-	-	-	-	-	577,799	553,845
Other tax	-	-	-	-	-	-	117,669	-	-	117,669	106,307
Intergovernmental	138,857	335,044	-	-	-	9,881	-	-	-	483,782	714,734
Interest	5,129	-	-	51,289	-	-	-	-	62,833	119,251	95,558
Miscellaneous	-	-	36,963	46,667	95,849	10,063	-	60,000	-	249,542	157,736
Total revenues	<u>143,986</u>	<u>335,044</u>	<u>220,832</u>	<u>675,755</u>	<u>95,849</u>	<u>19,944</u>	<u>117,669</u>	<u>60,000</u>	<u>62,833</u>	<u>1,731,912</u>	<u>1,800,744</u>
Expenditures:											
General government	-	-	207,496	-	-	-	-	-	-	207,496	185,615
Health and welfare	-	109,276	-	79,009	-	-	-	-	-	188,285	592,796
Public safety	-	116,904	-	-	-	22,273	35,457	-	-	174,634	402,635
Culture and recreation	121,793	108,864	-	-	200,448	-	-	33,903	-	465,008	395,088
Capital outlay	-	-	-	-	-	-	4,014	-	-	4,014	40,151
Debt issuance costs	-	-	-	-	-	-	-	-	-	-	-
Debt service:											
Principal	-	-	-	-	-	-	-	-	445,000	445,000	470,000
Interest	-	-	-	-	-	-	-	-	156,301	156,301	172,869
Miscellaneous	-	-	-	-	-	-	-	-	2,300	2,300	2,450
Total expenditures	<u>121,793</u>	<u>335,044</u>	<u>207,496</u>	<u>79,009</u>	<u>200,448</u>	<u>22,273</u>	<u>39,471</u>	<u>33,903</u>	<u>603,601</u>	<u>1,643,038</u>	<u>2,261,604</u>
Excess (deficiency) of revenues over expenditures	<u>22,193</u>	<u>-</u>	<u>13,336</u>	<u>596,746</u>	<u>(104,599)</u>	<u>(2,329)</u>	<u>78,198</u>	<u>26,097</u>	<u>(540,768)</u>	<u>88,874</u>	<u>(460,860)</u>
Other financing sources (uses):											
Operating transfers in from other funds	-	-	-	-	197,949	-	-	-	602,604	800,553	839,996
Total other financing sources (uses)	<u>-</u>	<u>-</u>	<u>-</u>	<u>-</u>	<u>197,949</u>	<u>-</u>	<u>-</u>	<u>-</u>	<u>602,604</u>	<u>800,553</u>	<u>839,996</u>
Net change in fund balances	<u>22,193</u>	<u>-</u>	<u>13,336</u>	<u>596,746</u>	<u>93,350</u>	<u>(2,329)</u>	<u>78,198</u>	<u>26,097</u>	<u>61,836</u>	<u>889,427</u>	<u>379,136</u>
Fund balances - January 1	<u>96,855</u>	<u>-</u>	<u>131,418</u>	<u>738,270</u>	<u>14,811</u>	<u>61,047</u>	<u>200,298</u>	<u>53,079</u>	<u>878,895</u>	<u>2,174,673</u>	<u>1,795,537</u>
Fund balances - December 31	<u>\$ 119,048</u>	<u>\$ -</u>	<u>\$ 144,754</u>	<u>\$ 1,335,016</u>	<u>\$ 108,161</u>	<u>\$ 58,718</u>	<u>\$ 278,496</u>	<u>\$ 79,176</u>	<u>\$ 940,731</u>	<u>\$ 3,064,100</u>	<u>\$ 2,174,673</u>

See the accompanying independent auditors' report.

**Park County, Colorado
Conservation Trust Fund
Budgetary Comparison Schedule
For the Year Ended December 31, 2007
(With Comparative Actual Amounts for 2006)**

	<u>2007</u>			Variance Positive (Negative)	<u>2006</u>
	<u>Original Budget</u>	<u>Final Budget</u>	<u>Actual</u>		<u>Actual</u>
Revenues:					
Intergovernmental	\$ 150,000	\$ 150,000	\$ 138,857	\$ (11,143)	\$ 149,450
Interest	1,500	1,500	5,129	3,629	2,859
Total revenues	<u>151,500</u>	<u>151,500</u>	<u>143,986</u>	<u>(7,514)</u>	<u>152,309</u>
Expenditures:					
Culture and recreation	232,000	236,439	121,793	114,646	89,786
Total expenditures	<u>232,000</u>	<u>236,439</u>	<u>121,793</u>	<u>114,646</u>	<u>89,786</u>
Excess (Deficiency) of revenues over expenditures	(80,500)	(84,939)	22,193	107,132	62,523
Fund balances - January 1	<u>82,415</u>	<u>96,855</u>	<u>96,855</u>	<u>14,440</u>	<u>34,332</u>
Fund balances - December 31	<u><u>\$ 1,915</u></u>	<u><u>\$ 11,916</u></u>	<u><u>\$ 119,048</u></u>	<u><u>\$ 121,572</u></u>	<u><u>\$ 96,855</u></u>

See the accompanying independent auditors' report.

**Park County, Colorado
Grant Fund
Budgetary Comparison Schedule
For the Year Ended December 31, 2007
(With Comparative Actual Amounts for 2006)**

	<u>2007</u>			<u>2006</u>
	<u>Original Budget</u>	<u>Final Budget</u>	<u>Actual</u>	<u>Final Budget Variance Positive (Negative) Actual</u>
Revenues:				
Intergovernmental	\$ 380,185	\$ 563,931	\$ 335,044	\$ (228,887)
Total revenues	<u>380,185</u>	<u>563,931</u>	<u>335,044</u>	<u>(228,887)</u>
Expenditures:				
Health and welfare	107,311	107,311	109,276	(1,965)
Public safety	76,683	153,628	116,904	36,724
Culture and recreation	216,339	323,140	108,864	214,276
Total expenditures	<u>400,333</u>	<u>584,079</u>	<u>335,044</u>	<u>249,035</u>
Excess (deficiency) of revenues over expenditures	(20,148)	(20,148)	-	20,148
Fund balances - January 1	<u>-</u>	<u>-</u>	<u>-</u>	<u>-</u>
Fund balances (deficit) - December 31	<u>\$ (20,148)</u>	<u>\$ (20,148)</u>	<u>\$ -</u>	<u>\$ 20,148</u>

See the accompanying independent auditors' report.

**Park County, Colorado
Employee Retirement Fund
Budgetary Comparison Schedule
For the Year Ended December 31, 2007
(With Comparative Actual Amounts for 2006)**

	<u>2007</u>			<u>2006</u>
	<u>Original and Final Budget</u>	<u>Actual</u>	<u>Variance Positive (Negative)</u>	<u>Actual</u>
Revenues:				
Property taxes	\$ 160,326	\$ 159,427	\$ (899)	\$ 149,336
Specific ownership taxes	22,000	24,442	2,442	23,228
Miscellaneous revenues	600	36,963	36,363	650
Total revenues	<u>182,926</u>	<u>220,832</u>	<u>37,906</u>	<u>173,214</u>
Expenditures:				
General government	213,400	207,496	5,904	185,615
Total expenditures	<u>213,400</u>	<u>207,496</u>	<u>5,904</u>	<u>185,615</u>
Excess (deficiency) of revenues over expenditures	(30,474)	13,336	43,810	(12,401)
Fund balances - January 1	<u>131,418</u>	<u>131,418</u>	<u>-</u>	<u>143,819</u>
Fund balances - December 31	<u><u>\$ 100,944</u></u>	<u><u>\$ 144,754</u></u>	<u><u>\$ 43,810</u></u>	<u><u>\$ 131,418</u></u>

See the accompanying Independent auditors' report.

Park County, Colorado
Sales Tax Trust Fund
Budgetary Comparison Schedule
For the Year Ended December 31, 2007
(With Comparative Actual Amounts for 2006)

	<u>2007</u>		Final Budget Variance Positive (Negative)	<u>2006</u>
	Original and Final Budget	Actual		Actual
Revenues:				
Sales tax	\$ 550,000	\$ 577,799	\$ 27,799	\$ 553,845
Miscellaneous	46,667	46,667	-	129,763
Interest	14,000	51,289	37,289	28,971
Total revenues	<u>610,667</u>	<u>675,755</u>	<u>65,088</u>	<u>712,579</u>
Expenditures:				
Health and welfare	616,000	79,009	536,991	502,561
Debt service:				
Principal	-	-	-	-
Interest	-	-	-	-
Total expenditures	<u>616,000</u>	<u>79,009</u>	<u>536,991</u>	<u>502,561</u>
Excess (deficiency) of revenues over expenditures	(5,333)	596,746	602,079	210,018
Fund balances - January 1	<u>738,270</u>	<u>738,270</u>	<u>-</u>	<u>528,252</u>
Fund balances - December 31	<u>\$ 732,937</u>	<u>\$ 1,335,016</u>	<u>\$ 602,079</u>	<u>\$ 738,270</u>

See the accompanying independent auditors' report.

**Park County, Colorado
Library Fund
Budgetary Comparison Schedule
For the Year Ended December 31, 2007
(With Comparative Actual Amounts for 2006)**

	<u>2007</u>			<u>Final Budget</u>	<u>2006</u>
	<u>Original</u>	<u>Final</u>	<u>Actual</u>	<u>Variance</u>	<u>Actual</u>
	<u>Budget</u>	<u>Budget</u>		<u>Positive</u>	
				<u>(Negative)</u>	
Revenues:					
Grant revenue	\$ -	\$ -	\$ -	\$ -	\$ -
Miscellaneous revenue	6,750	7,250	95,849	91,249	9,389
Total revenues	<u>6,750</u>	<u>7,250</u>	<u>95,849</u>	<u>91,249</u>	<u>9,389</u>
Expenditures:					
Culture and recreation	204,699	205,199	200,448	(2,650)	204,842
Total expenditures	<u>204,699</u>	<u>205,199</u>	<u>200,448</u>	<u>(2,650)</u>	<u>204,842</u>
(Deficiency) of revenues over expenditures	<u>(197,949)</u>	<u>(197,949)</u>	<u>(104,599)</u>	<u>88,599</u>	<u>(195,453)</u>
Other financing sources:					
Transfers in from other funds	197,949	197,949	197,949	3,345	197,127
Total other financing sources	<u>197,949</u>	<u>197,949</u>	<u>197,949</u>	<u>3,345</u>	<u>197,127</u>
Net change in fund balances	-	-	93,350	91,944	1,674
Fund balances - January 1	<u>13,080</u>	<u>14,811</u>	<u>14,811</u>	<u>-</u>	<u>13,137</u>
Fund balances - December 31	<u>\$ 13,080</u>	<u>\$ 14,811</u>	<u>\$ 108,161</u>	<u>\$ 91,944</u>	<u>\$ 14,811</u>

See the accompanying independent auditors' report.

Park County, Colorado
Sheriff's Seizure and Program Fund
Budgetary Comparison Schedule
For the Year Ended December 31, 2007
(With Comparative Actual Amounts for 2006)

	2007			Final Budget Variance Positive (Negative)	2006
	Original Budget	Final Budget	Actual		Actual
Revenues:					
Intergovernmental	\$ 4,000	\$ 12,700	\$ 9,881	\$ (2,819)	\$ 156,054
Miscellaneous	-	2,000	10,063	8,063	12,079
Total revenues	4,000	14,700	19,944	5,244	168,133
Expenditures:					
Public safety	-	23,100	22,273	827	127,654
Total expenditures	-	23,100	22,273	827	127,654
Excess (deficiency) of revenues over expenditures	4,000	(8,400)	(2,329)	6,071	40,479
Fund balances - January 1	71,620	61,047	61,047	-	20,568
Fund balances - December 31	\$ 75,620	\$ 52,647	\$ 58,718	\$ 6,071	\$ 61,047

See the accompanying independent auditors' report.

**Park County, Colorado
E-911 Authority Fund
Budgetary Comparison Schedule
For the Year Ended December 31, 2007
(With Comparative Actual Amounts for 2006)**

	2007		Final Budget Variance Positive (Negative)	2006
	Original and Final Budget	Actual		Actual
Revenues:				
Other taxes	\$ 100,000	\$ 117,669	\$ 17,669	\$ 106,307
Total revenues	<u>100,000</u>	<u>117,669</u>	<u>17,669</u>	<u>106,307</u>
Expenditures:				
Public safety	78,000	35,457	42,543	33,025
Capital outlay	22,000	4,014	17,986	40,151
Total expenditures	<u>100,000</u>	<u>39,471</u>	<u>60,529</u>	<u>73,176</u>
Excess (deficiency) of revenues over expenditures	-	78,198	78,198	33,131
Fund balances - January 1	<u>200,298</u>	<u>200,298</u>	-	<u>167,167</u>
Fund balances - December 31	<u><u>\$ 200,298</u></u>	<u><u>\$ 278,496</u></u>	<u><u>\$ 78,198</u></u>	<u><u>\$ 200,298</u></u>

See the accompanying independent auditors' report.

Park County, Colorado
1041 Fee Fund
Budgetary Comparison Schedule
For the Year Ended December 31, 2007
(With Comparative Actual Amounts for 2006)

	2007		Variance Positive (Negative)	2006
	Original and Final Budget	Actual		Actual
Revenues:				
Miscellaneous	\$ -	\$ 60,000	\$ 60,000	\$ 5,855
Total revenues	<u>-</u>	<u>60,000</u>	<u>60,000</u>	<u>5,855</u>
Expenditures:				
Culture and recreation	63,993	33,903	30,090	23,421
Total expenditures	<u>63,993</u>	<u>33,903</u>	<u>30,090</u>	<u>23,421</u>
Excess (deficiency) of revenues over expenditures	(63,993)	26,097	90,090	(17,566)
Fund balances - January 1	<u>53,079</u>	<u>53,079</u>	<u>-</u>	<u>70,645</u>
Fund balances - December 31	<u>\$ (10,914)</u>	<u>\$ 79,176</u>	<u>\$ 90,090</u>	<u>\$ 53,079</u>

See the accompanying independent auditors' report.

Park County, Colorado
Debt Service Fund
Budgetary Comparison Schedule
For the Year Ended December 31, 2007
(With Comparative Actual Amounts for 2006)

	2007		Final Budget Variance Positive (Negative)	2006
	Original and Final Budget	Actual		Actual
Revenues:				
Interest	\$ 30,000	\$ 62,833	\$ 32,833	\$ 63,728
Total revenues	<u>30,000</u>	<u>62,833</u>	<u>32,833</u>	<u>63,728</u>
Expenditures:				
Principal	445,000	445,000	-	470,000
Interest	156,302	156,301	1	172,869
Other	2,500	2,300	200	2,450
Total expenditures	<u>603,802</u>	<u>603,601</u>	<u>201</u>	<u>645,319</u>
Excess (Deficiency) of revenues over expenditures	(573,802)	(540,768)	33,034	(581,591)
Other financing sources (uses):				
Transfers in from other funds	602,604	602,604	-	642,869
Total other financing sources (uses)	<u>602,604</u>	<u>602,604</u>	<u>-</u>	<u>642,869</u>
Net change in fund balances	28,802	61,836	33,034	61,278
Fund balances - January 1	<u>878,895</u>	<u>878,895</u>	<u>-</u>	<u>817,617</u>
Fund balances - December 31	<u>\$ 907,697</u>	<u>\$ 940,731</u>	<u>\$ 33,034</u>	<u>\$ 878,895</u>

See the accompanying independent auditors' report.

**Park County, Colorado
Capital Projects Fund
Budgetary Comparison Schedule
For the Year Ended December 31, 2007
(With Comparative Actual Amounts for 2006)**

	2007			Final Budget Variance Positive (Negative)	2006
	Original Budget	Final Budget	Actual		Actual
Revenues:					
Trustee interest	\$ -	\$ -	\$ -	\$ -	\$ -
Total revenues	<u>-</u>	<u>-</u>	<u>-</u>	<u>-</u>	<u>-</u>
Expenditures:					
Other	15,000	15,000	15,000	-	-
Capital outlay	-	15,592	15,592	-	-
Debt service:					
Principal	-	-	-	-	256,471
Interest	-	-	-	-	20,345
Total expenditures	<u>15,000</u>	<u>30,592</u>	<u>30,592</u>	<u>-</u>	<u>276,816</u>
Excess (Deficiency) of revenues over expenditures	<u>(15,000)</u>	<u>(30,592)</u>	<u>(30,592)</u>	<u>-</u>	<u>(276,816)</u>
Other financing sources:					
Transfers in from other funds	37,991	81,304	81,304	-	358,816
Transfers to other funds	-	-	-	-	-
Total other financing sources	<u>37,991</u>	<u>81,304</u>	<u>81,304</u>	<u>-</u>	<u>358,816</u>
Net change in fund balances	22,991	50,712	50,712	-	82,000
Fund balances - January 1	<u>122,971</u>	<u>174,971</u>	<u>174,971</u>	<u>-</u>	<u>92,971</u>
Fund balances - December 31	<u>\$ 145,962</u>	<u>\$ 225,683</u>	<u>\$ 225,683</u>	<u>\$ -</u>	<u>\$ 174,971</u>

See the accompanying independent auditors' report.

Park County, Colorado
Risk Management Internal Service Fund
Budgetary Comparison Schedule
For the Year Ended December 31, 2007
(With Comparative Actual Amounts for 2006)

	<u>2007</u>			<u>Final Budget</u>	<u>2006</u>
	<u>Original</u>	<u>Final</u>	<u>Actual</u>	<u>Variance</u>	<u>Actual</u>
	<u>Budget</u>	<u>Budget</u>		<u>Positive</u>	
				<u>(Negative)</u>	
Operating revenues:					
Contributions	\$ 2,083,729	\$ 2,083,729	\$ 2,123,558	\$ 39,829	\$ 1,879,492
Total operating revenues	<u>2,083,729</u>	<u>2,083,729</u>	<u>2,123,558</u>	<u>39,829</u>	<u>1,879,492</u>
Operating expenses:					
Claims and administration	2,011,528	2,011,528	1,717,200	294,328	1,992,943
Total operating expenses	<u>2,011,528</u>	<u>2,011,528</u>	<u>1,717,200</u>	<u>294,328</u>	<u>1,992,943</u>
Operating income (loss)	<u>72,201</u>	<u>72,201</u>	<u>406,358</u>	<u>334,157</u>	<u>(113,451)</u>
Non-operating revenues:					
Interest	10,000	10,000	22,011	12,011	10,879
Transfer in from other funds	100,000	300,000	300,000	-	100,000
Total non-operating revenues	<u>110,000</u>	<u>310,000</u>	<u>322,011</u>	<u>212,011</u>	<u>110,879</u>
Change in net assets	<u>\$ 182,201</u>	<u>\$ 382,201</u>	728,369	<u>\$ 346,168</u>	(2,572)
Net assets - January 1			<u>96,176</u>		<u>98,748</u>
Net assets - December 31			<u>\$ 824,545</u>		<u>\$ 96,176</u>

See the accompanying independent auditors' report.

**Park County, Colorado
Recreation Fund
Budgetary Comparison Schedule
For the Year Ended December 31, 2007
(With Comparative Actual Amounts for 2006)**

	<u>2007</u>			<u>Final Budget Variance Positive (Negative)</u>	<u>2006</u>
	<u>Original Budget</u>	<u>Final Budget</u>	<u>Actual</u>		<u>Actual</u>
Revenues:					
Fee revenue	\$ 25,000	\$ 39,000	\$ 38,910	\$ (90)	\$ 27,979
Total revenues	<u>25,000</u>	<u>39,000</u>	<u>38,910</u>	<u>(90)</u>	<u>27,979</u>
Expenditures:					
Culture and recreation	25,000	50,200	45,398	4,802	6,988
Total expenditures	<u>25,000</u>	<u>50,200</u>	<u>45,398</u>	<u>4,802</u>	<u>6,988</u>
Excess (Deficiency) of revenues over expenditures	<u>-</u>	<u>(11,200)</u>	<u>(6,488)</u>	<u>4,712</u>	<u>20,991</u>
Net change in fund balances	-	(11,200)	(6,488)	4,712	20,991
Fund balances - January 1	<u>52,884</u>	<u>65,875</u>	<u>65,875</u>	<u>-</u>	<u>44,884</u>
Fund balances - December 31	<u>\$ 52,884</u>	<u>\$ 54,675</u>	<u>\$ 59,387</u>	<u>\$ 4,712</u>	<u>\$ 65,875</u>

See the accompanying independent auditors' report.

Park County, Colorado
Agency Fund
Treasurer and Public Trustee
Statement of Changes in Assets and Liabilities
For the Year Ended December 31, 2007

	<u>Balance January 1 2007</u>	<u>Additions</u>	<u>Deletions</u>	<u>Balance December 31 2007</u>
Assets				
Cash and Investments - County Treasurer	\$ 11,269,166			\$ 13,647,564
Cash and Investments - Public Trustee	<u>113,827</u>			<u>112,835</u>
	<u>11,382,993</u>	<u>188,525,536</u>	<u>186,148,130</u>	<u>13,760,399</u>
Less: Held for County Funds	<u>(10,830,340)</u>			<u>(12,744,125)</u>
Total Assets	<u><u>\$ 552,653</u></u>			<u><u>\$ 1,016,274</u></u>
Liabilities:				
Due to other governmental agencies	\$ 438,826			\$ 903,439
Due to Public Trustee	<u>113,827</u>			<u>112,835</u>
Total liabilities	<u><u>\$ 552,653</u></u>	<u><u>\$ 192,629,375</u></u>	<u><u>\$192,165,754</u></u>	<u><u>\$ 1,016,274</u></u>

See the accompanying independent auditors' report.

Park County, Colorado
STATISTICAL SECTION

This part of Park County's comprehensive annual report presents detailed information as a context for understanding what the information in the financial statements, note disclosures, and required supplementary information says about the government's overall financial health.

Contents

Financial Trends

These schedules contain trend information to help the reader understand how the government's financial performance and well-being have changed over time G1

Revenue Capacity

These schedules contain information to help the reader access the government's most significant revenue source, property tax G7

Debt Capacity

These schedules present information to help the reader assess the affordability of the government's current levels of outstanding debt and the government's ability to issue additional debt in the future. G13

Demographic and Operating Information

These schedules offer demographic and economic indicators to help the reader Understand the environment within which the government's financial activities Take place. G15

PARK COUNTY, COLORADO
NET ASSETS BY COMPONENT
Last Three Fiscal Years

	<i>FISCAL YEAR</i>		
	<u>2007</u>	<u>2006</u>	<u>2005</u>
GOVERNMENTAL ACTIVITIES			
Invested in Capital Assets	\$ 7,501,297	\$ 4,166,262	\$ 6,170,758
Restricted	565,069	535,902	532,178
Unrestricted	12,383,469	12,897,645	9,110,032
TOTAL GOVERNMENTAL NET ASSETS	<u>\$ 20,449,835</u>	<u>\$ 17,599,809</u>	<u>\$ 15,812,968</u>
BUSINESS-TYPE ACTIVITIES			
Invested in Capital Assets	\$ -	\$ -	\$ -
Restricted	-	-	-
Unrestricted	59,387	65,875	44,884
TOTAL BUSINESS-TYPE NET ASSETS	<u>\$ 59,387</u>	<u>\$ 65,875</u>	<u>\$ 44,884</u>
TOTAL PRIMARY GOVERNMENT			
Invested in Capital Assets	\$ 7,501,297	\$ 4,166,262	\$ 6,170,758
Restricted	565,069	535,902	532,178
Unrestricted	12,442,856	12,963,520	9,154,916
TOTAL PRIMARY GOVERNMENTAL NET ASSETS	<u>\$ 20,509,222</u>	<u>\$ 17,665,684</u>	<u>\$ 15,857,852</u>

Note: The County first implemented GASB Statement 34 for the year ended December 31, 2004.

PARK COUNTY COLORADO
Changes in Net Assets By Component
Last Three Fiscal Years
(Accrual Basis of Accounting)

Expenses	2007	2006	2005
Governmental Activities:			
General Government	\$ 5,042,281	\$ 5,127,655	\$ 5,051,259
Health and Welfare	2,839,386	3,386,282	3,154,045
Public Safety	5,718,203	6,376,205	5,837,046
Culture and Recreation	723,001	660,923	765,044
Public Works	4,334,745	4,421,922	4,749,936
Judicial - District Attorney	263,781	260,781	242,637
Interest on long-term debt	267,896	306,517	391,905
Total governmental activities	19,189,293	20,540,285	20,191,872
Business type Activities:			
Recreation	45,398	6,988	-
Total business type activities	45,398	6,988	-
Total primary government expenses	\$ 19,234,691	\$20,547,273	\$ 20,191,872
 Program Revenues			
Governmental Activities:			
Charges for services			
General Government	\$ 1,688,882	\$ 1,545,274	\$ 961,622
Health and Welfare	299,142	180,163	214,029
Public Safety	2,298,627	3,136,428	2,593,929
Culture and Recreation	5,024	3,853	-
Public Works	586,903	136,925	747,868
Operating grants and contributions	7,480,543	8,501,411	8,453,903
Capital grants and contributions	148,738	305,503	130,780
Total governmental activities	12,507,859	13,809,557	13,102,131
Business type Activities:			
Recreation	38,910	27,979	22,078
Total business type activities	38,910	27,979	22,078
Total primary government program revenues	\$ 12,546,769	\$13,837,536	\$ 13,124,209

Note: The County first implemented GASB Statement 34 for the year ended December 31, 2004.

PARK COUNTY COLORADO
Changes in Net Assets By Component
Last Three Fiscal Years
(Accrual Basis of Accounting)
(Continued)

	<u>2007</u>	<u>2006</u>	<u>2005</u>
Net (Expense) Revenue			
Governmental activities	\$ (6,681,434)	\$ (6,730,728)	\$ (7,089,741)
Business-type activities	<u>(6,488)</u>	<u>20,991</u>	<u>22,078</u>
Total primary government	<u>\$ (6,687,922)</u>	<u>\$ (6,709,737)</u>	<u>\$ (7,067,663)</u>
General Revenues and Other Changes			
Taxes			
Property taxes	\$ 6,408,427	\$ 5,996,015	\$ 5,768,466
Specific ownership taxes	982,479	933,056	914,383
Sales taxes	577,799	553,845	520,243
Other taxes	135,634	120,921	109,475
Investment earnings	706,652	554,644	332,116
Miscellaneous	720,469	325,813	209,012
Sales of capital assets	-	133,275	-
Transfers	-	(100,000)	(22,806)
Prior period adjustment	-	-	-
Total government activities	<u>9,531,460</u>	<u>8,517,569</u>	<u>\$ 7,830,889</u>
Business-type activities			
Transfers	<u>-</u>	<u>-</u>	<u>22,806</u>
Total primary government	<u>\$ 9,531,460</u>	<u>\$ 8,517,569</u>	<u>\$ 7,853,695</u>
Changes in Net Assets			
Governmental activities	\$ 2,850,026	\$ 1,786,841	\$ 741,148
Business-type activities	<u>(6,488)</u>	<u>20,991</u>	<u>44,884</u>
Total primary government	<u>\$ 2,843,538</u>	<u>\$ 1,807,832</u>	<u>\$ 786,032</u>

Note: The County first implemented GASB Statement 34 for the year ended December 31, 2004.

Park County, Colorado
Fund Balances, Governmental Funds
Last Ten Fiscal Years

	<u>2007</u>	<u>2006</u>	<u>2005</u>	<u>2004</u>	<u>2003</u>	<u>2002</u>	<u>2001</u>	<u>2000</u>	<u>1999</u>	<u>1998</u>
General Fund										
Reserved	\$ 577,905	\$ 564,765	\$ 553,476	\$ 515,422	\$ 436,655	\$ 448,892	\$ 488,240	\$ 419,360	\$ 11,804	\$ 120,732
Unreserved	<u>3,063,097</u>	<u>2,899,489</u>	<u>2,703,057</u>	<u>1,970,338</u>	<u>2,410,565</u>	<u>2,041,067</u>	<u>1,736,710</u>	<u>1,569,433</u>	<u>2,554,454</u>	<u>1,581,826</u>
Total General Fund	<u>\$ 3,641,002</u>	<u>\$ 3,464,254</u>	<u>\$ 3,256,533</u>	<u>\$ 2,485,760</u>	<u>\$ 2,847,220</u>	<u>\$ 2,489,959</u>	<u>\$ 2,224,950</u>	<u>\$ 1,988,793</u>	<u>\$ 2,566,258</u>	<u>\$ 1,702,558</u>
All other governmental funds										
Reserved	\$ 1,205,835	\$ 1,080,614	\$ 953,912	\$ 902,757	\$ 706,257	\$ 1,131,264	\$ 744,510	\$ 821,288	\$ 980,004	\$ 1,273,499
Unreserved, reported in:										
Special revenue funds	6,876,222	6,383,441	5,339,543	4,968,613	4,208,389	3,822,536	4,555,993	4,781,893	4,479,905	4,184,751
Capital projects funds	-	-	-	-	-	-	-	-	-	-
Debt service funds	-	-	-	-	-	-	-	-	-	-
Total all other governmental funds	<u>\$ 8,082,057</u>	<u>\$ 7,464,055</u>	<u>\$ 6,293,455</u>	<u>\$ 5,871,370</u>	<u>\$ 4,914,646</u>	<u>\$ 4,953,800</u>	<u>\$ 5,300,503</u>	<u>\$ 5,603,181</u>	<u>\$ 5,459,909</u>	<u>\$ 5,458,250</u>

PARK COUNTY, COLORADO
Changes in Fund Balances of Governmental Funds
Last Ten Fiscal Years

	2007	2006	2005	2004	2003	2002	2001	2000	1999	1998
REVENUES										
Taxes	\$ 8,104,339	\$ 7,603,838	\$7,312,567	\$6,911,145	\$6,515,703	\$5,777,037	\$5,417,587	\$4,856,797	\$4,839,682	\$4,450,252
Licenses and Permits	733,392	890,184	849,619	871,767	902,865	1,285,241	857,663	850,237	796,730	764,648
Intergovernmental revenue	10,479,712	11,645,985	10,947,881	9,694,628	9,675,912	9,362,733	7,296,517	6,106,796	5,591,851	4,868,810
Fines and forfeitures	207,286	217,141	167,130	203,782	155,626	137,332	145,577	-	-	-
Charges for services	1,087,469	1,056,246	1,137,501	1,090,408	999,617	676,419	951,458	804,992	889,776	824,014
Disposal of assets	77,883	133,275	70,910	104,084	125,211	104,857	103,941	104,598	185,127	107,885
Interest	706,652	554,644	324,842	221,725	195,076	222,944	364,716	565,582	397,535	383,993
Miscellaneous	642,586	325,813	138,102	208,625	320,637	238,573	383,773	702,571	1,100,590	1,799,598
TOTAL REVENUES	22,039,319	22,427,126	20,948,552	19,306,164	18,890,647	17,805,136	15,521,232	13,991,573	13,801,291	13,199,200
EXPENDITURES										
General Government	4,885,246	4,846,053	4,453,857	4,319,546	3,767,469	3,594,298	3,736,888	3,717,361	3,023,695	3,250,454
Health and Welfare	2,887,080	3,358,983	3,133,859	3,418,414	2,589,794	2,822,520	1,597,808	1,505,313	1,532,290	1,150,696
Public safety	5,403,603	5,831,385	5,335,929	4,177,231	4,064,412	3,744,712	3,234,046	2,716,457	2,370,531	3,260,291
Culture and Recreation	717,399	636,695	743,486	698,878	806,655	604,514	549,867	1,042,497	483,384	413,006
Public works	3,908,702	3,573,763	4,046,238	3,502,774	3,312,141	4,368,940	3,892,483	4,362,851	3,361,841	2,696,370
Judicial - District Attorney	270,137	260,781	242,637	236,409	444,209	520,840	484,597	203,733	466,284	175,905
Capital outlay	627,365	736,583	1,103,660	3,036,265	2,699,660	1,842,514	1,549,531	650,830	1,719,744	2,061,135
Debt issue costs	-	-	-	221,995	-	-	-	-	-	-
Debt service:										
Principal	1,958,914	1,394,244	1,040,430	1,088,743	2,668,578	1,067,183	1,302,886	690,770	755,968	459,817
Interest	268,822	307,868	341,183	349,587	611,198	501,333	509,115	430,122	359,207	358,525
Miscellaneous	17,300	2,450	2,612	16,214	150	-	-	-	-	-
TOTAL EXPENDITURES	20,944,568	20,948,805	20,443,891	21,066,056	20,964,266	19,066,854	16,857,221	15,319,934	14,072,944	13,826,199

PARK COUNTY, COLORADO
Changes in Fund Balances of Governmental Funds
Last Ten Fiscal Years
(Continued)

	2007	2006	2005	2004	2003	2002	2001	2000	1999	1998
Excess of Revenues over (under) Expenditures	1,094,751	1,478,321	504,661	(1,759,892)	(1,629,646)	(1,261,718)	(1,335,989)	(1,328,361)	(271,663)	(626,999)
OTHER FINANCING SOURCES (USES)										
Proceeds from capital leases	-	-	-	-	423,742	1,291,334	1,369,173	905,380	1,456,278	1,210,176
Proceeds from debt issuance	-	-	210,780	5,455,000	-	-	-	-	-	-
Premiums on debt issuance	-	-	-	4,605	-	-	-	-	-	-
Payments to bond refunding agent	-	-	-	(3,104,449)	-	-	-	-	-	-
Transfers In	881,857	1,198,812	1,185,830	776,048	1,047,667	877,913	1,043,797	1,403,941	498,957	389,878
Transfers Out	(1,181,857)	(1,298,812)	(1,208,636)	(776,048)	-	(917,913)	(1,043,797)	(1,403,941)	(498,957)	(389,878)
Total Other Sources (Uses)	(300,000)	(100,000)	187,974	2,355,156	1,471,409	1,251,334	1,369,173	905,380	1,456,278	1,210,176
Net change in fund balance	\$ 794,751	\$ 1,378,321	\$ 692,635	\$ 595,264	\$ (158,237)	\$ (10,384)	\$ 33,184	\$ (422,981)	\$ 1,184,615	\$ 583,177
Debt service as a percentage of noncapital expenditures	12.33%	9.20%	7.69%	8.80%	21.89%	10.02%	13.43%	8.27%	9.92%	7.48%

PARK COUNTY, COLORADO
Assessed and Estimated Actual Value of Taxable Property
Last Ten Years
(Unaudited)

Real and Personal Property				
Fiscal Year	Assessed Value	Estimated Actual Value	Ratio of Total Assessed to Total Estimated Actual Value	Assessed Residential Property Tax Value to Market (a)
1997	137,298,280	913,267,638	15.0	10.36
1998	179,033,970	1,230,596,881	14.5	10.36
1999	184,430,660	1,297,898,585	14.2	9.74
2000	239,646,931	1,645,608,498	14.6	9.74
2001	243,266,845	1,696,293,761	14.3	9.15
2002	286,440,340	2,076,217,262	13.8	9.15
2003	292,052,152	2,160,296,960	13.5	7.96
2004	311,281,375	2,473,620,686	12.6	7.96
2005	315,266,811	2,548,018,568	12.4	7.96
2006	353,355,301	2,832,018,926	12.5	7.96
2007	357,367,586	2,911,724,971	12.3	7.96

(a) Commercial and industrial property is assessed at 29% of market value.
Source: Park County Assessor's Office

PARK COUNTY, COLORADO
Property Tax Levies
Direct and Overlapping
1987 - 2007
(Unaudited)

<u>Park County</u>								
<u>Fiscal Year</u>	<u>Assessment Year</u>	<u>General Fund</u>	<u>Special Revenue Fund</u>	<u>Total</u>	<u>All Other Special Districts (1)</u>	<u>School Districts (1)</u>	<u>Total</u>	<u>Percent County to Total</u>
1988	1987	10.444	2.624	13.068	10.817	30.305	54.190	24.08%
1989	1988	11.973	3.062	15.035	12.615	33.814	61.464	24.43%
1990	1989	16.549	2.504	19.053	13.689	41.63	74.372	25.58%
1991	1990	17.897	3.135	21.032	15.312	42.265	78.609	26.72%
1992	1991	20.897	3.168	24.065	15.498	46.261	85.824	28.00%
1993	1992	20.499	3.566	24.065	14.980	46.100	85.279	28.22%
1994	1993	20.897	3.168	24.065	12.574	45.016	81.655	29.42%
1995	1994	20.517	3.548	24.065	13.122	45.805	82.992	28.95%
1996	1995	20.517	3.548	24.065	12.326	43.721	80.230	30.00%
1997	1996	19.163	3.548	22.711	13.039	40.908	76.658	29.57%
1998	1997	16.781	2.509	19.290	10.682	33.475	63.447	30.40%
1999	1998	17.768	2.509	20.277	10.463	39.108	69.848	29.03%
2000	1999	13.955	1.970	15.925	9.183	31.226	56.334	28.27%
2001	2000	15.046	2.029	17.075	10.559	31.448	59.082	28.90%
2002	2001	14.067	1.320	15.387	10.121	29.242	54.750	28.10%
2003	2002	15.338	1.922	17.260	9.880	27.390	54.530	31.65%
2004	2003	15.438	1.938	17.376	8.705	25.780	51.861	33.50%
2005	2004	16.342	2.043	18.385	9.501	25.134	53.020	34.68%
2006	2005	15.168	1.904	17.072	9.340	23.950	50.362	33.90%
2007	2006	15.168	1.904	17.072	10.002	23.951	51.025	33.46%
2008	2007	14.686	1.850	16.536	9.631	21.938	48.105	34.37%

(1) Average

PARK COUNTY, COLORADO
Principal Taxpayers
Assessment Year 2006
(Fiscal Year 2007)

Taxpayer	Type of Business	2007 Assessed Value	Percentage of Total Taxable Assessed Value
1) Intermountain Rural Electric Assn	Utility	\$4,014,000	1.27%
2) Colorado Natural Gas, Inc.	Utility	2,994,700	0.95%
3) Qwest Corporation	Utility	2,825,200	0.90%
4) Public Service Co. (Xcel)	Utility	2,551,400	0.81%
5) Pine Ridge Residential LLC	Developer	852,370	0.27%
6) Gordon, James D.	Commercial	822,200	0.26%
7) Centurytel of Eagle	Utility	819,000	0.26%
8) Rocky Valley Partners LLC	Developer	774,060	0.25%
9) Hutchinson, Robert L Investments	Commercial	767,390	0.24%
10) Hartsel Springs Ranch of Colorado	Commercial	631,080	0.20%
Total Top Ten Principal Taxpayers		<u>\$17,051,400</u>	<u>4.13%</u>
Total Assessed Valuation		<u>\$412,989,018</u>	<u>100.00%</u>

Source: County Assessor

*does not include Exempt Account Types

Information from the period nine years prior to 12/31/2007 was not available.

PARK COUNTY, COLORADO
Property Tax Levies and Collections
1998-2007
(Unaudited)

Fiscal Year	Total Tax Levy	Current Tax Collected	Percent of Levy Collected	Delinquent Tax Collected	Total Tax Collections	Collections As % of Current Levy
1998	3,453,565	3,433,287	99.41%	N/A	3,433,287	N/A
1999	3,739,701	3,720,488	99.49%	N/A	3,720,488	N/A
2000	3,816,377	3,640,415	95.39%	N/A	3,640,415	N/A
2001	4,153,781	4,093,178	98.54%	(9,143)	4,084,035	98.32%
2002	4,407,458	4,372,552	99.21%	17,172	4,389,724	99.60%
2003	5,040,820	5,085,357	100.88%	4,009	5,089,366	100.96%
2004	5,408,826	5,344,974	98.82%	7,264	5,352,237	98.95%
2005	5,796,181	5,763,584	99.44%	4,882	5,768,466	99.52%
2006	6,032,481	5,992,743	99.34%	2,817	5,995,560	99.39%
2007	6,435,475	6,407,985	99.57%	442	6,408,427	99.58%

Source: Park County Treasurer

N/A: Data not available

PARK COUNTY, COLORADO
Distribution of Property
by Property Type Classification*
(Unaudited)

Property Classification	2006 Assessed Valuation	2007 Assessed Valuation	2007 Percent of Tax Roll
Residential Properties	185,019,066	207,391,250	50.22%
Vacant Land	132,232,549	153,678,870	37.21%
Commercial Properties	19,980,976	24,543,055	5.94%
State Assessed Properties	11,154,000	14,396,700	3.49%
Agricultural Properties	5,003,020	5,511,910	1.33%
Natural Resources Properties	2,717,630	3,994,890	0.97%
Producing Mines	56,630	28,160	0.01%
Industrial Land and Improvements	535,040	660,760	0.16%
Personal Property	2,124,527	2,783,423	0.67%
 County Total (All Classifications)	 <u>\$358,823,438</u>	 <u>\$412,989,018</u>	

*Data provided by Park County Assessor

PARK COUNTY, COLORADO
Schedule of Sales Tax Collection
1998 Inception Year through 2007
(Unaudited)

	1998	1999	2000	2001	2002	2003	2004	2005	2006	2007	Percent Increase (Decrease) over 2005
January		19,009.24	28,647.67	28,415.45	27,704.34	37,064.38	23,507.10	31,114.01	33,646.61	34,635.74	103%
February	\$20,128.45	22,634.21	25,917.60	33,422.73	25,259.34	25,221.08	34,354.25	28,968.15	31,177.39	32,789.84	105%
March	34,574.13	31,188.54	32,147.96	29,208.61	31,006.85	29,427.31	31,209.03	37,847.75	35,441.45	39,936.13	113%
April	23,254.41	28,901.23	27,454.32	27,931.75	31,571.97	26,792.89	35,858.79	32,539.29	37,985.96	36,352.81	96%
May	25,429.58	24,846.12	32,329.45	35,745.44	35,640.37	38,440.21	32,214.94	38,154.41	43,565.94	44,547.69	102%
June	47,023.00	40,026.81	44,637.71	56,808.11	45,125.20	48,668.60	56,048.34	55,833.27	63,268.74	64,471.58	102%
July	37,679.84	44,184.55	47,018.36	48,418.90	50,453.66	48,580.68	51,081.91	60,375.26	58,941.05	62,743.70	106%
August	37,823.95	41,192.99	48,690.01	47,142.15	46,317.28	50,908.55	43,708.20	56,531.05	63,128.05	61,159.81	97%
September	27,401.23	53,636.26	48,242.83	53,103.06	44,369.50	47,628.50	58,144.87	58,498.37	63,707.71	67,854.33	107%
October	43,998.05	31,804.64	34,684.45	38,460.90	29,860.53	44,945.02	34,479.79	40,897.21	43,710.03	48,114.95	110%
November	22,178.01	28,131.77	30,316.09	29,801.69	32,397.77	33,151.62	38,821.52	36,682.14	30,377.02	40,099.17	132%
December	34,717.11	29,998.29	42,951.19	42,705.36	35,592.07	34,187.34	39,406.95	40,802.40	48,895.28	45,092.71	92%
Total	<u>\$354,207.76</u>	<u>395,554.65</u>	<u>443,037.64</u>	<u>471,164.15</u>	<u>435,298.88</u>	<u>465,016.18</u>	<u>478,835.69</u>	<u>518,243.31</u>	<u>553,845.23</u>	<u>577,798.46</u>	104%

PARK COUNTY, COLORADO
Ratios of Outstanding Debt by Type
1998-2007
(Unaudited)

Fiscal Year	Capital Improvement Revenue Bonds	Certificates of Participation	Capital Leases	Total Primary Government	Percentage of Personal Income	Per Capita
1998	\$ 4,210,000	\$ -	\$ 3,181,701	\$ 7,393,699	2.66%	\$ 554.62
1999	4,060,000	-	4,082,009	8,144,008	2.58%	576.44
2000	3,905,000	-	4,429,591	8,336,591	2.34%	567.12
2001	3,745,000	-	4,615,854	8,362,855	2.42%	546.56
2002	3,575,000	-	5,239,822	8,816,824	2.67%	560.23
2003	3,400,000	-	4,203,121	7,603,121	1.73%	471.66
2004	3,495,000	2,270,000	3,384,378	9,149,378	1.83%	531.35
2005	3,285,000	2,230,000	2,804,728	8,319,728	1.63%	481.38
2006	2,995,000	2,050,000	1,880,485	6,925,485	1.33%	404.90
2007	2,730,000	1,870,000	366,571	4,966,571	0.95%	292.74

PARK COUNTY, COLORADO
Computation of Legal Debt Margin
1998-2007
(Unaudited)

	<u>2007</u>	<u>2006</u>	<u>2005</u>	<u>2004</u>	<u>2003</u>	<u>2002</u>	<u>2001</u>	<u>2000</u>	<u>1999</u>	<u>1998</u>
Assessed Value	\$412,989,018	357,367,586	353,355,301	311,281,375	292,052,152	286,440,340	286,448,791	239,646,931	184,430,660	179,033,970
Debt Limit										
1.5% of assessed value	6,194,835	5,360,514	5,300,330	4,669,221	4,380,782	4,296,605	4,296,732	3,594,704	2,766,460	2,685,510
Outstanding Bonded Debt										
Applied to Limit	-	-	-	-	-	-	-	-	-	-
Legal Debt Margin	<u>\$6,194,835</u>	<u>\$5,360,514</u>	<u>\$5,300,330</u>	<u>\$4,669,221</u>	<u>\$4,380,782</u>	<u>\$4,296,605</u>	<u>4,296,732</u>	<u>3,594,704</u>	<u>2,766,460</u>	<u>2,685,510</u>

PARK COUNTY, COLORADO
Demographic Information
(Unaudited)

<u>Year</u>	<u>Population</u>	<u>Per Capita Income</u>	<u>Personal Income</u>	<u>% of Unemployment</u>
1990	7,174	\$16,073	115,307,702	
1991	7,723	16,707	129,028,161	
1992	8,136	17,392	141,501,312	
1993	8,649	19,006	164,382,894	
1994	9,625	19,615	188,794,375	4.2% ***
1995	10,713	19,867	212,835,171	4.1% ***
1996	11,552	20,885	241,263,520	4.5% ***
1997	12,583	21,588	271,641,804	3.3% ***
1998	13,331	20,837	277,778,047	3.8% ***
1999	14,128	22,323	315,379,344	3.0% ***
2000	14,700	24,235	356,254,500	2.5% ***
2001	15,301	22,569	345,328,269	3.5% ***
2002	15,738	20,990	330,340,620	5.3% ***
2003	16,120	27,297 **	440,027,640	5.5% ***
2004	17,219 **	28,981 **	499,023,839	5.4% ***
2005	17,283 **	29,590 **	511,403,970	4.8% ***
2006	17,104 **	30,547 **	522,475,888	4.0% ***
2007	16,966 **	30,814 **	522,790,324	3.6% ***

*Source: Colorado Division of Local Governments

** Source: ESRI Business Solutions

***Source: CO Dept of Labor & Employment

PARK COUNTY, COLORADO
Employers by Category
2006

Industry Name	Number of Businesses	Ave. 2005 Wages	Ave. # Employed	% of Labor Force
Government (all)	30	\$29,210	843	8.70%
Construction Trade	174	\$29,278	340	3.51%
Food & Lodging	44	\$11,555	314	3.24%
Retail Trade (all)	48	\$23,137	210	2.17%
Professional & Tech.	86	\$57,714	162	1.67%
Admin. Services	30	\$31,056	61	0.63%
Wholesale Trade	29	\$52,159	39	0.40%
Manufacturing	22	\$30,676	73	0.75%
Health Care/Social	11	\$18,542	53	0.55%
Real Estate	27	\$22,410	45	0.46%
Finance & Insurance	14	\$57,186	44	0.45%
Information Services	11	\$55,814	31	0.32%
Entertain/Recreation	7	\$10,930	19	0.20%

Total Adult Labor Force (2006) 9,687
Number of Employers in Park County (2005): 590
Ave. # Employed in Park County (2005): 2,351
Largest Employer (2005): Government (all) 843
Ave. Annual Wage paid in County (2005): \$29,986
Poverty Status (2006): 6.5% of County population

* Source CO Dept of Labor & Employment and ESRI
Business Solutions

Park County, Colorado
Recent History of Foreclosures
(Unaudited)

Year	Number of Foreclosures	Percent Change
1991	104	
1992	70	-33%
1993	62	-11%
1994	42	-32%
1995	56	33%
1996	54	-4%
1997	49	-9%
1998	92	88%
1999	70	-24%
2000	64	-9%
2001	92	44%
2002	147	60%
2003	139	-5%
2004	155	12%
2005	200	29%
2006	208	4%
2007	205	-1%

Park County, Colorado
Schedule of Indirect Costs, Fringe Benefits, and Allocation Base
Last Seven Fiscal Years
(Unaudited)

	Fiscal Year						
	2007	2006	2005	2004	2003	2002	2001
Fringe Benefits							
Contribution to Pension	215,843	218,792	211,794	203,520	193,275	186,889	162,265
Payroll Taxes	585,972	592,006	570,117	535,701	504,393	546,401	472,535
Group Health Insurance	1,860,656	1,591,914	1,237,654	1,165,768	1,125,244	976,835	847,455
Worker's Comp	260,884	279,711	286,713	299,224	222,160	187,609	191,369
Unemployment	17,179	22,946	21,896	13,697	12,850	15,855	14,051
Long Term Disability	27,104	24,878	21,868	21,994	21,164	17,980	9,592
Paid time off earned	21,794	22,676	20,806	20,532	19,705	21,526	9,741
Annual leave earned (used)	22,079	22,332	16,969	17,280	15,364	20,109	10,028
sick leave used	13,182	15,751	12,913	10,926	9,729	12,156	5,273
Total fringe benefits	<u><u>3,024,694</u></u>	<u><u>2,791,005</u></u>	<u><u>2,400,728</u></u>	<u><u>2,288,642</u></u>	<u><u>2,123,884</u></u>	<u><u>1,985,359</u></u>	<u><u>1,722,310</u></u>
Allocation base = salaries	7,938,286	7,991,039	7,678,848	7,237,372	6,933,339	6,785,371	6,229,752
Fringe benefit rate	38.10%	34.93%	31.26%	31.62%	30.63%	29.26%	27.65%

Source: County's Financial Reports

PARK COUNTY, COLORADO
Miscellaneous Statistics
December 31, 2007
(Unaudited)

Date of Incorporation	1861
Form of Government	Board of County Commissioner
County Seat	Fairplay, Colorado
Incorporated Towns:	
<i>Alma</i>	
<i>Fairplay</i>	
Land (In Square Miles)	
<i>Federal Land</i>	1,125
<i>State Land</i>	131
<i>Other Government</i>	50
<i>Private Land</i>	860
Population (1)	16,966
Miles of County Maintained Roads: (3)	1,664
Motor Vehicle Registration: (2)	23,431
Total Voter Registration: (2)	12,074
Notes:	
(1) Source ESRI Business Solutions	
(2) Source Park County Clerk and Recorder	
(3) Source Park County Road and Bridge Department	

COMPLIANCE

The public report burden for this information collection is estimated to average 380 hours annually.

LOCAL HIGHWAY FINANCE REPORT		City or County: Park
		YEAR ENDING : December 2007
This Information From The Records Of (example - City of _ or County of _): County of PARK	Prepared By: Phone:	Kathy Boyce, Finance Director 719-836-4214

I. DISPOSITION OF HIGHWAY-USER REVENUES AVAILABLE FOR LOCAL GOVERNMENT EXPENDITURE

ITEM	A. Local Motor-Fuel Taxes	B. Local Motor-Vehicle Taxes	C. Receipts from State Highway-User Taxes	D. Receipts from Federal Highway Administration
1. Total receipts available				
2. Minus amount used for collection expenses				
3. Minus amount used for nonhighway purposes				
4. Minus amount used for mass transit				
5. Remainder used for highway purposes				

II. RECEIPTS FOR ROAD AND STREET PURPOSES

III. DISBURSEMENTS FOR ROAD AND STREET PURPOSES

ITEM	AMOUNT	ITEM	AMOUNT
A. Receipts from local sources:		A. Local highway disbursements:	
1. Local highway-user taxes		1. Capital outlay (from page 2)	707756.55
a. Motor Fuel (from Item I.A.5.)		2. Maintenance:	2256238.1
b. Motor Vehicle (from Item I.B.5.)		3. Road and street services:	
c. Total (a.+b.)		a. Traffic control operations	37503.95
2. General fund appropriations		b. Snow and ice removal	676652.41
3. Other local imposts (from page 2)	176078.18	c. Other	50770.55
4. Miscellaneous local receipts (from page 2)	547548.08	d. Total (a. through c.)	764926.91
5. Transfers from toll facilities		4. General administration & miscellaneous	338317.16
6. Proceeds of sale of bonds and notes:		5. Highway law enforcement and safety	11256.2
a. Bonds - Original Issues		6. Total (1 through 5)	4078494.92
b. Bonds - Refunding Issues		B. Debt service on local obligations:	
c. Notes	0	1. Bonds:	
d. Total (a. + b. + c.)	0	a. Interest	
7. Total (1 through 6)	723626.26	b. Redemption	
B. Private Contributions		c. Total (a. + b.)	0
C. Receipts from State government (from page 2)	4600737.49	2. Notes:	
D. Receipts from Federal Government (from page 2)	100647.78	a. Interest	147698
E. Total receipts (A.7 + B + C + D)	5425011.53	b. Redemption	1478737
		c. Total (a. + b.)	1626435
		3. Total (1.c + 2.c)	1626435
		C. Payments to State for highways	
		D. Payments to toll facilities	
		E. Total disbursements (A.6 + B.3 + C + D)	
			5704929.92

IV. LOCAL HIGHWAY DEBT STATUS

(Show all entries at par)

	Opening Debt	Amount Issued	Redemptions	Closing Debt
A. Bonds (Total)				0
1. Bonds (Refunding Portion)				
B. Notes (Total)	1845308	0	1478737.47	366570.53

V. LOCAL ROAD AND STREET FUND BALANCE

	A. Beginning Balance	B. Total Receipts	C. Total Disbursements	D. Ending Balance	E. Reconciliation
	3723994	5425011.53	5704929.92	3444075.61	

Notes and Comments:

LOCAL HIGHWAY FINANCE REPORT		STATE: Colorado	
		YEAR ENDING (mm/yy): December 2007	
II. RECEIPTS FOR ROAD AND STREET PURPOSES - DETAIL			
ITEM	AMOUNT	ITEM	AMOUNT
A.3. Other local imposts:		A.4. Miscellaneous local receipts:	
a. Property Taxes and Assessments	172,228	a. Interest on investments	649
b. Other local imposts:		b. Traffic Fines & Penalties	
1. Sales Taxes	0	c. Parking Garage Fees	
2. Infrastructure & Impact Fees	0	d. Parking Meter Fees	
3. Liens	0	e. Sale of Surplus Property	81,131
4. Licenses	3,850	f. Charges for Services	152,308
5. Other	0	g. Other Misc. Receipts	13,460
6. Total (1. through 5.)	3,850	h. Other PILT funds	300,000
c. Total (a. + b.)	176,078	i. Total (a. through h.)	547,548
	(Carry forward to page 1)		(Carry forward to page 1)
III. DISBURSEMENTS FOR ROAD AND STREET PURPOSES - DETAIL			
ITEM	AMOUNT	ITEM	AMOUNT
C. Receipts from State Government		D. Receipts from Federal Government	
1. Highway-user taxes	4266003.26	1. FHWA (from Item I.D.5.)	
2. State general funds		2. Other Federal agencies:	
3. Other State funds:		a. Forest Service	87,824
a. State bond proceeds		b. FEMA	
b. Project Match		c. HUD	
c. Motor Vehicle	134734.23	d. Federal Transit Admin	
d. Other (Specify) Gaming Impact	200000	e. U.S. Corps of Engineers	
e. Other (Specify)		f. Other Federal Mineral Leasing	12,824
f. Total (a. through e.)	334734.23	g. Total (a. through f.)	100,648
4. Total (1. + 2. + 3.f)	4600737.49	3. Total (1. + 2.g)	
			(Carry forward to page 1)
III. DISBURSEMENTS FOR ROAD AND STREET PURPOSES - DETAIL			
	ON NATIONAL HIGHWAY SYSTEM (a)	OFF NATIONAL HIGHWAY SYSTEM (b)	TOTAL (c)
A.1. Capital outlay:			
a. Right-Of-Way Costs			0
b. Engineering Costs			0
c. Construction:			
(1). New Facilities			0
(2). Capacity Improvements			0
(3). System Preservation		707,757	707,757
(4). System Enhancement & Operation		0	0
(5). Total Construction (1) + (2) + (3) + (4)	0	707,757	707,757
d. Total Capital Outlay (Lines 1.a. + 1.b. + 1.c.5)	0	707,757	707,757
			(Carry forward to page 1)
Notes and Comments:			



To the Board of County Commissioners
Park County, Colorado

**REPORT ON INTERNAL CONTROL OVER FINANCIAL
REPORTING AND ON COMPLIANCE AND OTHER MATTERS
BASED ON AN AUDIT OF FINANCIAL STATEMENTS PERFORMED
IN ACCORDANCE WITH *GOVERNMENT AUDITING STANDARDS***

We have audited the financial statements of the governmental activities, the business-type activities, each major fund, and the aggregate remaining fund information of Park County, Colorado, which collectively comprise the County's basic financial statements and have issued our report thereon dated July 16, 2008. We conducted our audit in accordance with auditing standards generally accepted in the United States of America and the standards applicable to financial audits contained in *Government Auditing Standards*, issued by the Comptroller General of the United States.

Internal Control over Financial Reporting

In planning and performing our audit, we considered the County's internal control over financial reporting as a basis for designing our auditing procedures for the purpose of expressing our opinion on the financial statements, but not for the purpose of expressing an opinion on the effectiveness of the County's internal control over financial reporting. Accordingly, we do not express an opinion on the effectiveness of the County's internal control over financial reporting.

A control deficiency exists when the design or operation of a control does not allow management of employees, in the normal course of performing their assigned functions, to prevent or detect misstatements on a timely basis. A significant deficiency is a control deficiency, or combination of control deficiencies, that adversely affects the County's ability to initiate, authorize, record, process, or report financial data reliably in accordance with generally accepted accounting principles such that there is more than a remote likelihood that a misstatement of the County's financial statements that is more than inconsequential will not be prevented or detected by the County's internal control.

A material weakness is a significant deficiency, or combination of significant deficiencies, that results in more than a remote likelihood that a material misstatement of the financial statements will not be prevented or detected by the County's internal control.

Our consideration of internal control over financial reporting was for the limited purpose described in the first paragraph of this section and would not necessarily identify all deficiencies in internal control that might be significant deficiencies or material weaknesses. We did not identify any deficiencies in internal control over financial reporting that we consider to be material weaknesses, as defined above

Compliance and Other Matters

As part of obtaining reasonable assurance about whether the County's financial statements are free of material misstatement, we performed tests of its compliance with certain provisions of laws, regulations, contracts and grants, noncompliance with which could have a direct and material effect on the determination of financial statement amounts. However, providing an opinion on compliance with those provisions was not an objective of our audit and, accordingly, we do not express such an opinion. The results of our tests disclosed no instances of noncompliance or other matters that are required to be reported under *Government Auditing Standards*.

We noted certain matters that we reported to management of Park County, Colorado in a separate letter dated July 16, 2008.

This report is intended solely for the information and use of the County Commissioners, management, and federal awarding agencies and is not intended to be and should not be used by anyone other than these specified parties.

John Luthr & Associates, LLC

July 16, 2008

A *control deficiency* in an entity's internal control over compliance exists when the design or operation of a control does not allow management or employees, in the normal course of performing their assigned functions, to prevent or detect noncompliance with a type of compliance requirement of a federal program on a timely basis. A *significant deficiency* is a control deficiency, or combination of control deficiencies, that adversely affects the County's ability to administer a federal program such that there is more than a remote likelihood that noncompliance with a type of compliance requirement of a federal program that is more than inconsequential will not be prevented or detected by the entity's internal control.

A material weakness is a significant deficiency, or combination of significant deficiencies, that results in more than a remote likelihood that material noncompliance with a type of compliance requirement of a federal program will not be prevented or detected by the entity's internal control.

Our consideration of internal control over compliance was for the limited purpose described in the first paragraph of this section and would not necessarily identify all deficiencies in internal control that might be significant deficiencies or material weaknesses. We did not identify any deficiencies in internal control over compliance that we consider to be material weaknesses, as defined above.

This report is intended solely for the information and use of the County Commissioners, management, and federal awarding agencies and is not intended to be and should not be used by anyone other than these specified parties.

John Luttler & Associates, LLC

July 16, 2008

PARK COUNTY, COLORADO

SCHEDULE OF FINDINGS AND QUESTIONED COSTS
Year Ended December 31, 2007

Summary of Auditors= Results

Financial Statements

Type of auditors= report issued: unqualified

Internal control over financial reporting:

\$ Material weaknesses identified? _____ yes no

\$ Reportable conditions identified that are not considered to be material weaknesses?

_____ yes none reported

Noncompliance material to financial statements noted?

_____ yes no

Federal Awards

Internal control over major programs:

\$ Material weaknesses identified? _____ yes no

\$ Reportable conditions identified that are not considered to be material weaknesses?

_____ yes none reported

Type of auditor's report issued on compliance for major programs: unqualified

Any audit findings disclosed that are required to be reported in accordance with section 510(a) of Circular A-133?

_____ yes no

Identification of major program:

10.551 Food Stamp Issuance
10.561 Food Stamp Administration

Dollar threshold used to distinguish between type A and type B programs: \$300,000

Auditee qualified as low-risk auditee? yes _____ no

Findings Related to Financial Statements

The audit of the financial statements did not disclose any significant deficiencies in internal control that would be considered a material weakness, and did not disclose any instances of noncompliance with requirements of certain provisions of laws, regulations, and grants that were material to those financial statements.

Findings and Questioned Costs for Federal Awards

The audit of federal awards did not disclose any significant deficiencies in internal control that would be considered a material weakness, and did not disclose any instances of noncompliance with requirements of certain provisions of laws, regulations, and grants that were material to those federal awards.

Park County, Colorado
SCHEDULE OF EXPENDITURES OF FEDERAL AWARDS
For the Year Ended December 31, 2007

	Major Program ?	CDA #	TOTAL EXPENDITURES
Passed through the State Department of Public Health			
WIC	No	10.557	105,269
WIC Vaccines	No	93.268	29,801
Maternal & Child Health Block Grant	No	93.994	2,868
Passed Through the State Department of Human Services			
Food Stamp Issuance	Yes	10.551	750,285
Food Stamp Administration	Yes	10.561	46,491
<u>US DEPARTMENT OF HEALTH AND HUMAN SERVICES</u>			
Passed through the State Department of Human Services			
TANF CO Works	No	93.558	80,532
Title IV-D	No	93.563	59,514
LEAP	No	93.568	149,030
CCDF	No	93.596	58,342
CCDF Discretion	No	93.575	(7,270)
Title IV-B	No	93.645	4,219
Title IV-E	No	93.658	112,133
IV-E Adoption	No	93.659	7,284
Title XX Block Grant	No	93.667	57,626
Title XIX Medicaid	No	93.778	51,895
Passed through the State Department of Public Health			
Health Alert Network Grant	No	93.283	50,064
Maternal & Child Health	No	93.110	592
<u>U.S. DEPARTMENT OF JUSTICE</u>			
US Department of Justice - EDWARD BYRNE MEMORIAL FORMULA GRANT	No	16.579	29,111
US Department of Justice - VOCA	No	16.575	91,989
Total Federal Financial Assistance			\$ 1,679,775

NOTES

1. Basis of Presentation

The Schedule of Expenditures of Federal Awards includes the federal grant activity of Park County and is presented on the modified accrual basis of accounting. The information in this schedule is presented in accordance with the requirements of OMB Circular A-133, *Audits of States, Local Governments, and Non-Profit Organizations*. Therefore, some amounts presented in this schedule may differ from amounts presented in or used in the preparation of the purpose financial statements.

2. Sub-recipients

The County does not have significant sub recipients.

3. Determining the Value of Non-cash Awards Expended

Food issuances and commodities: Fair market value of food stamps (food issuances) or commodities, respectively, at the time of receipt, or the assessed value provided by the federal agency.

Immunization incentive funds: Dollar amounts of vaccines used, provided by the federal agency.